

**TEM**

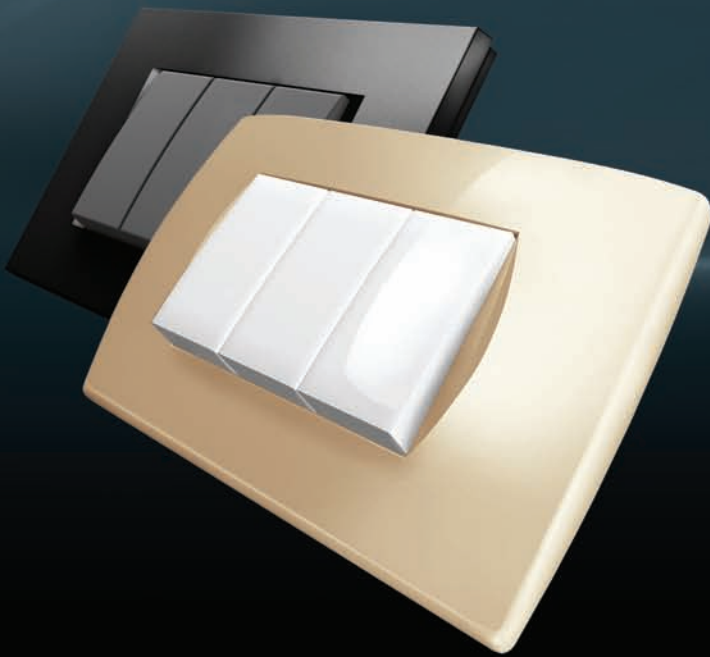
touching completeness

T I M E L E S S

U N I V E R S A L

M O D U L A R

# MODUL®



line 4

soft 4

MA 40

CUBO 43

**TEM** touching completeness



S I M P L E

S T A N D A R D

T I M E L E S S



**ekonomik<sup>®</sup>**

44

**fontana**

66

accessories

70



It's  
Vrijeme je za MODUL<sup>®</sup>  
time  
II.generation

line

feel modern  
osjećaj se moderno

think modular  
misli modularno



soft



enjoy living  
uživaj u životu

see difference  
uoči razliku

# MODUL

design by: Borut Dvornik & Bojan Klančar

Pripravite se na elegantno savršenstvo novih oblika. Osjetite sjajnost površina, koje se nježno poigravaju s modernim elementima u vašem prostoru. Osjetite drugačiju udobnost profinjenih oblika. Posebno za vas proizveli smo "Soft Touch" tehnologiju, da je svakim vašim dodiranjem doživite.

M O D E R A N D I Z A J N



Savršen, ravno oblikovan,  
tanki profil.  
Thin, completely flat profile.

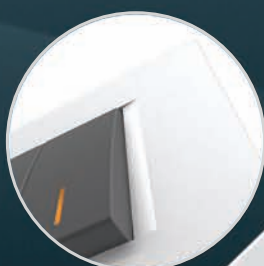


Nagrađeni dizajn.  
Design Award.

Prepare yourself for elegant perfection of a new design. Test the gloss of surfaces that are gently playing with modern elements in your own space. Notice the comfort of fine design that is different by touching. The "Soft Touch" Technology is designed especially for you so that every touch you made becomes special adventure.



T I M E L E S S   A E S T H E T I C



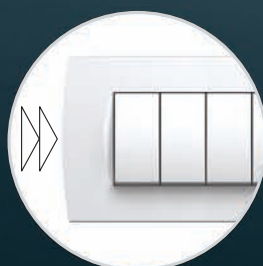
Vrhunski izgled sa svih strana.  
Top appearance from every side.

# MODUL

## M O D U L A R N O S T

Osigurali smo, da je sistem cjelovit. U njemu ćete naći sve elemente za svaku kombinaciju po vašoj mjeri. Osnovni elementi sistema su moduli. Module možete kombinirati u vodoravni ili uspravni niz, kako vama najbolje odgovara. Kombinacije jednostavno prilagođavate ili dopunjujete.

We have provided a complete system. It contains all the elements for any kind of composition. Modules are basic elements of the system. They are easily combined horizontally or vertically as you prefer. These combinations can simply be adjusted or supplemented.



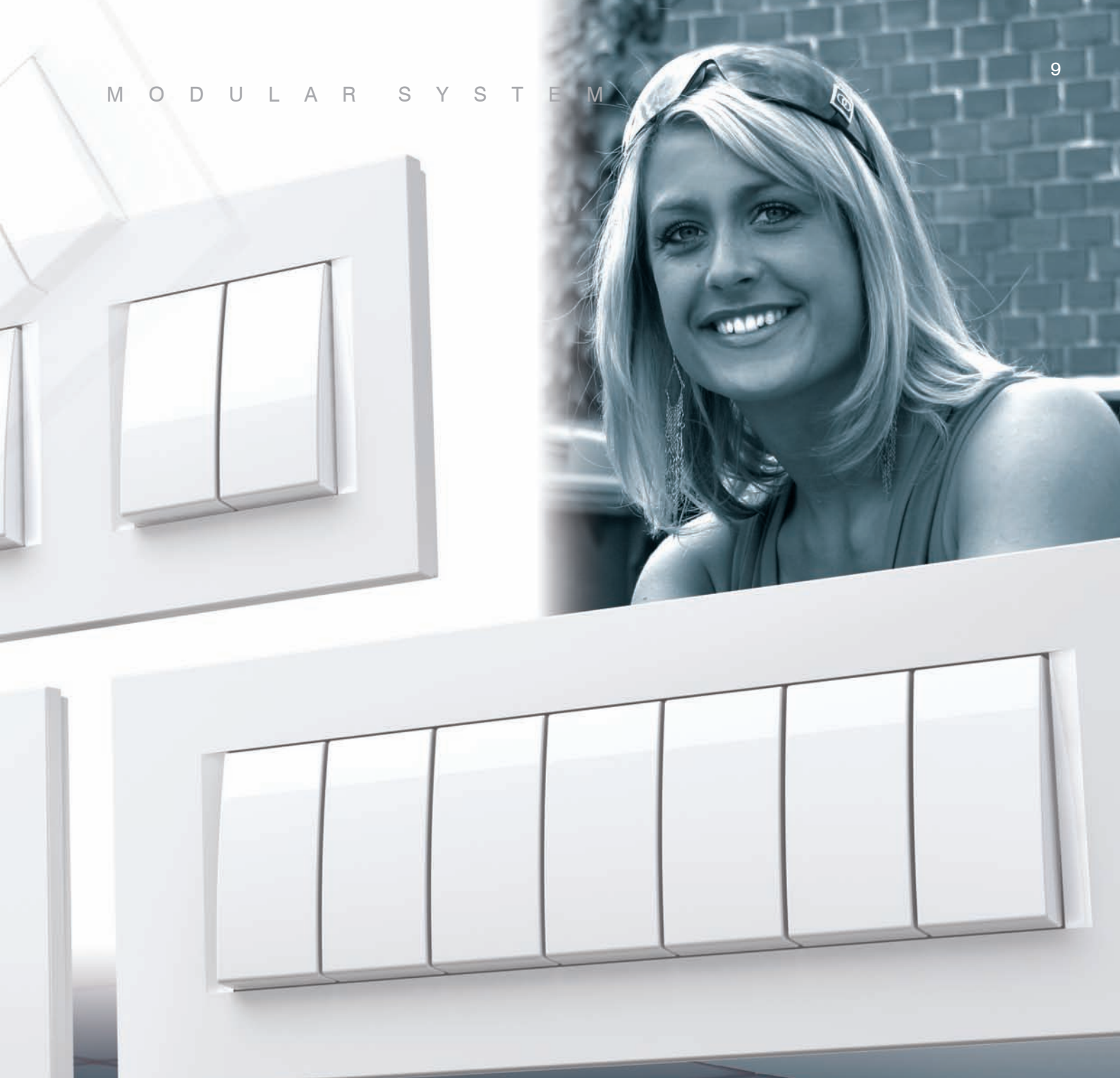
Za modularni sistem je potrebno manje prostora.

Modular system takes less space.



U istom okviru moguće je sastaviti kombinaciju modula po vašoj želji.

You can make a combination of different modules.

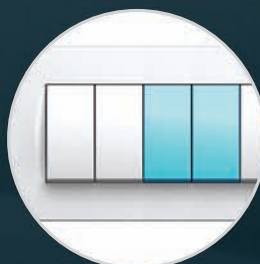


C O M P L E T E F A M I L Y



Mogućnost centralnog nadzora s jednog mjesta.

Controlling from central place with many modules in the group is possible.



Jednostavno dopunjavanje elemenata u sistem, koje možemo ugraditi i naknadno.

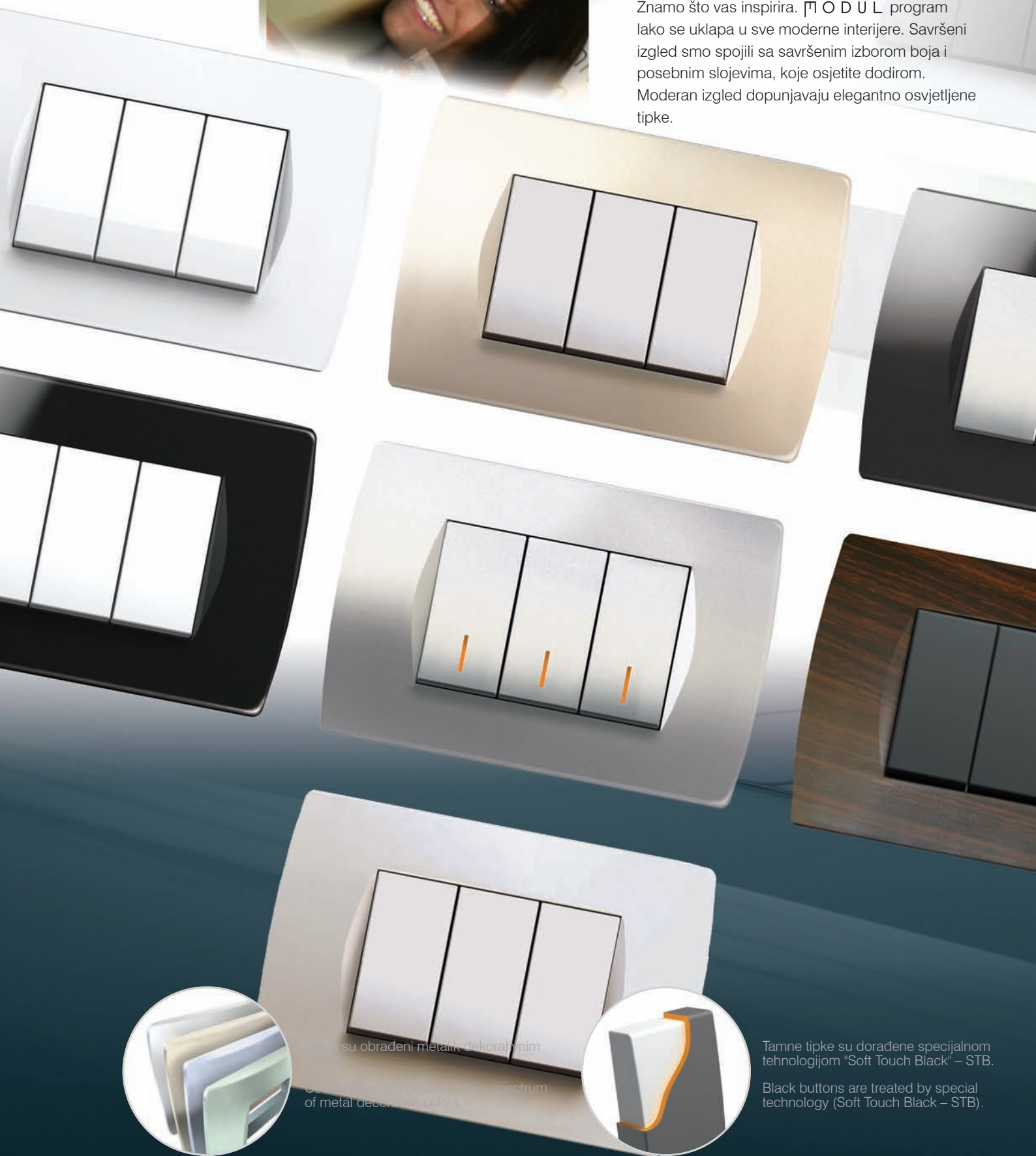
You can simply add elements to the system also in the future.

# MODUL



# HARMONIJA

Znamo što vas inspirira. MODUL program lako se uklapa u sve moderne interijere. Savršeni izgled smo spojili sa savršenim izborom boja i posebnim slojevima, koje osjetite dodirrom. Moderan izgled dopunjavaju elegantno osvijetljene tipke.



Tipke su obrađeni metalik dekorativnim

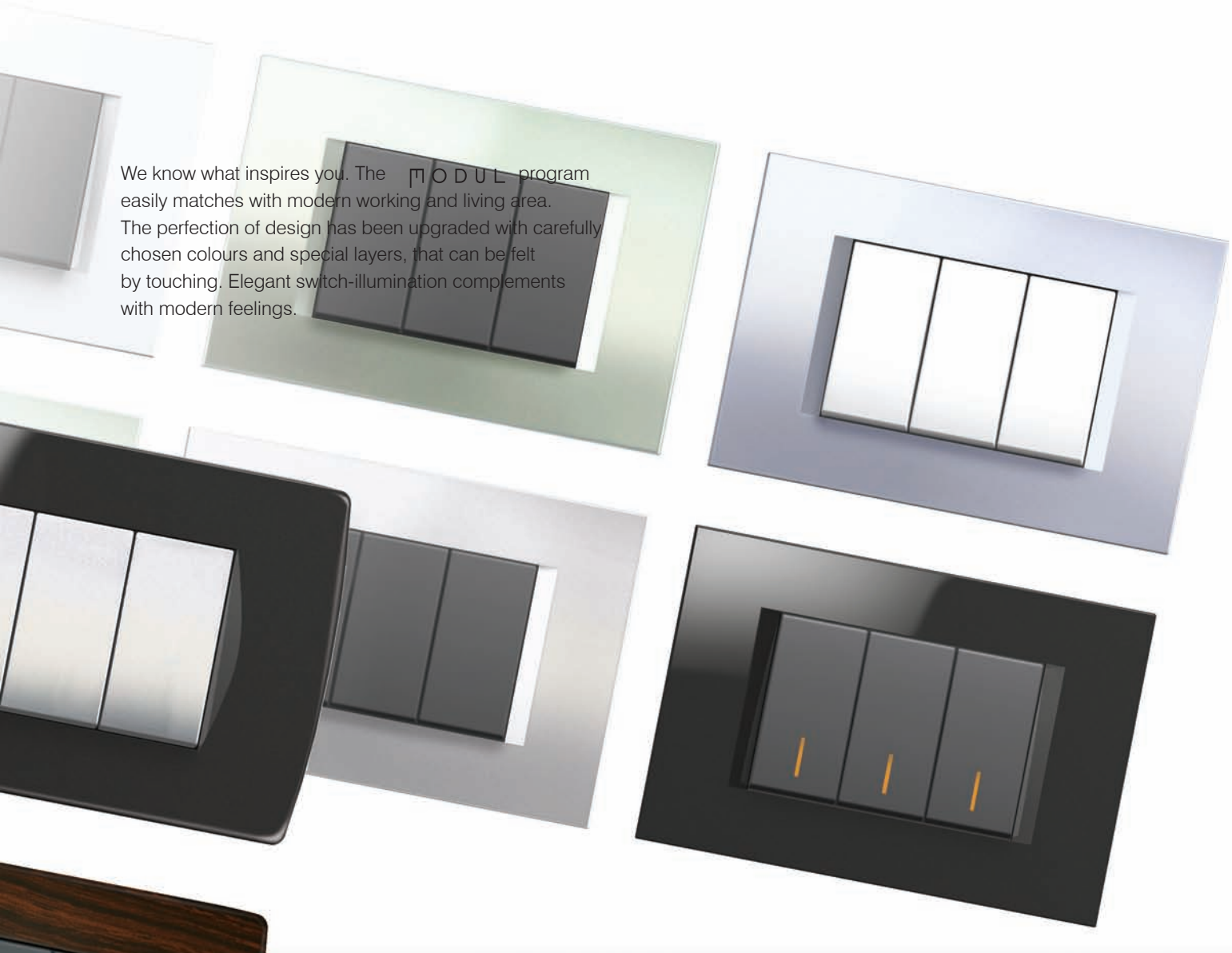
Coatings are treated with a spectrum of metal decorative colors.



Tamne tipke su doradene specijalnom tehnologijom "Soft Touch Black" – STB.

Black buttons are treated by special technology (Soft Touch Black – STB).

We know what inspires you. The **MODUL** program easily matches with modern working and living area. The perfection of design has been upgraded with carefully chosen colours and special layers, that can be felt by touching. Elegant switch-illumination complements with modern feelings.



I N S P I R I N G   A D V E N T U R E



Tipke s indikatorom služe za kontrolno i noćno osvjetljavanje sklopki.

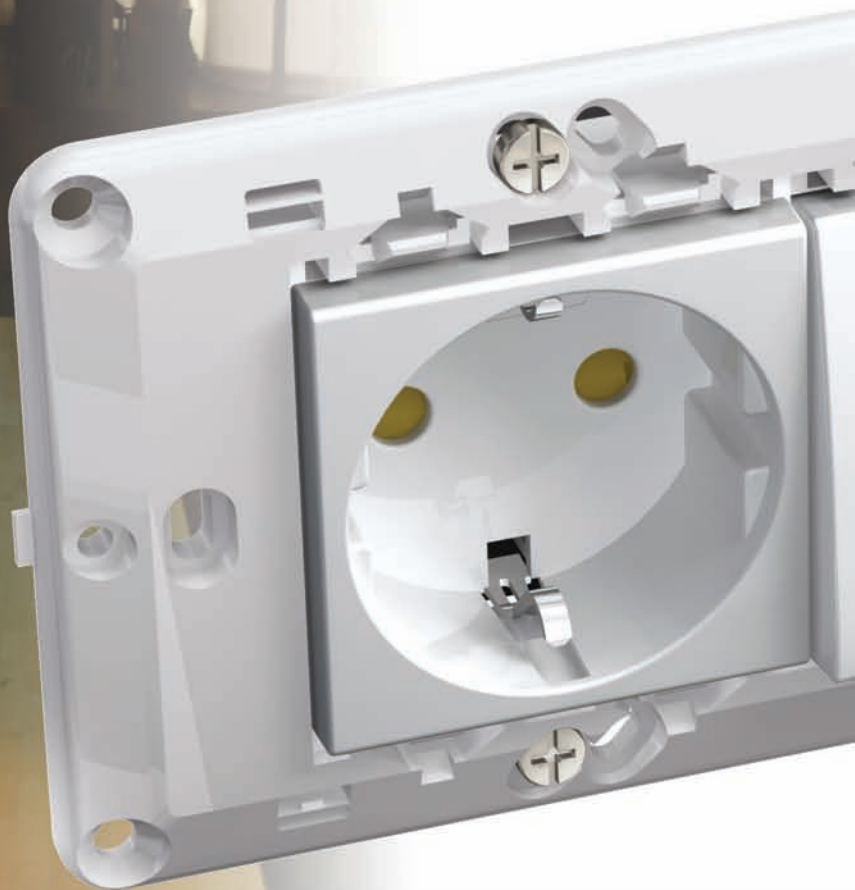
Buttons with diffuser can be used as control and night-time illumination.

# MODUL

# J E D N O S T A V N O S T

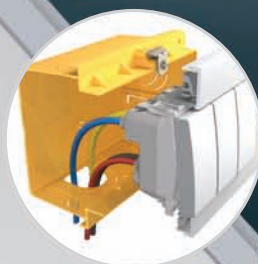
MODUL smo razvili za vas koji cijenite smišljeno oblikovan proizvod. Sistem oduševljava profesionalce i majstore tipa "Uradi sam". Prednosti sistema su neovisnost od ugrađenih kutija, kompletan izbor elemenata, jednostavna ugradnja i prilagodljivost. Odgovara za prvu ugradnju i za adaptaciju.

The MODUL has been developed for those who appreciate thoughtfully designed product. Professionals and "do-it yourself" masters will be enthusiastic with the products. The system prides upon the following facts: its independence from installed boxes, complete range of elements, easy installation and adaptability.



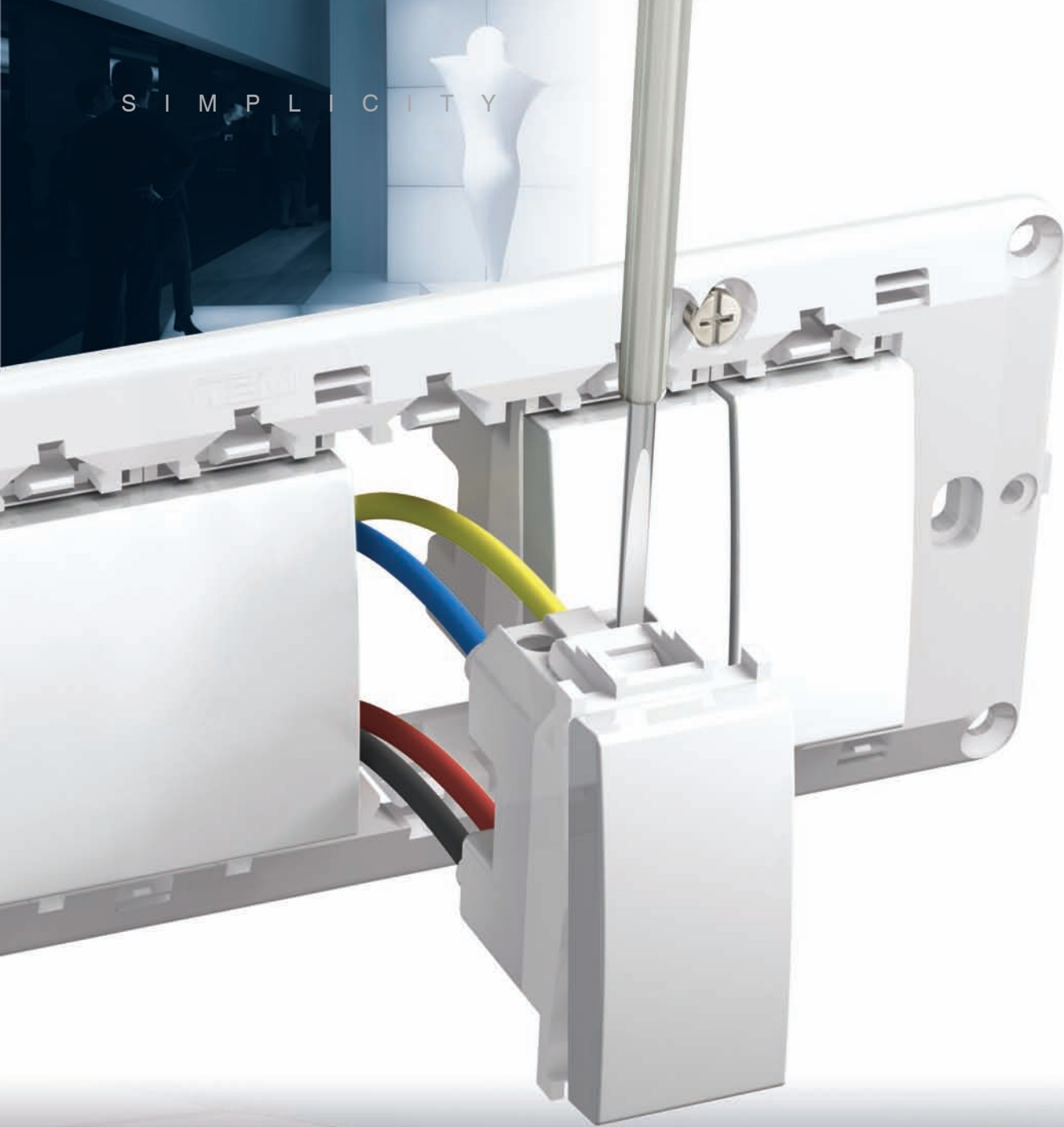
Pojedinačni moduli i priključni kontakti lako su dostupni s prednje strane.

The modules can easily be pulled out, from the front side terminals are always accessible.



U pravokutnim kutijama više je prostora za priključne vodiče.

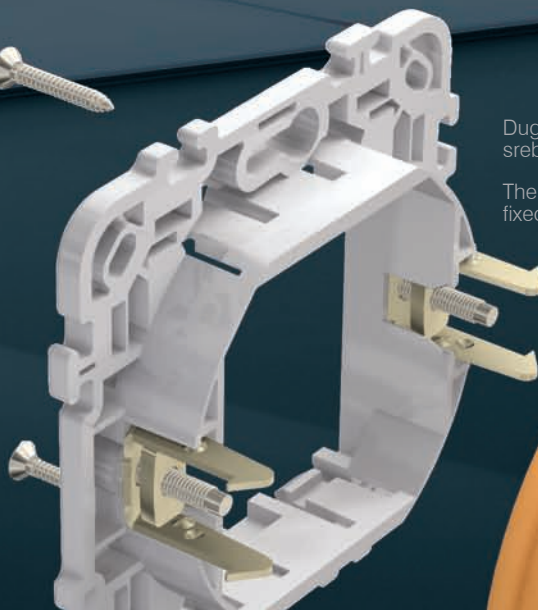
In the rectangular boxes there is more space for electrical cables.



F R E E D O M O F C R E A T I V I T Y

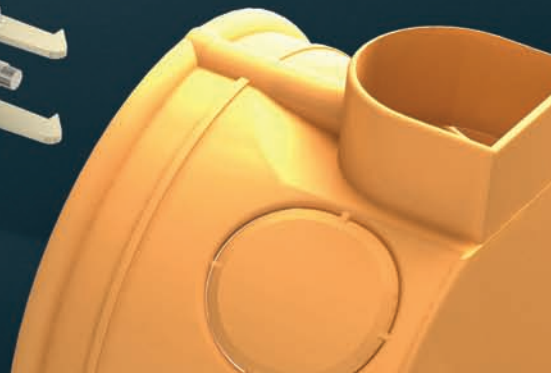
Sve priključnice imaju posebnu zaštitu od dodira elemenata pod naponom.

It is possible to join the mounting frames size 2M into groups.



Dugotrajnost preklapanja omogućavaju srebrni elementi kontakta.

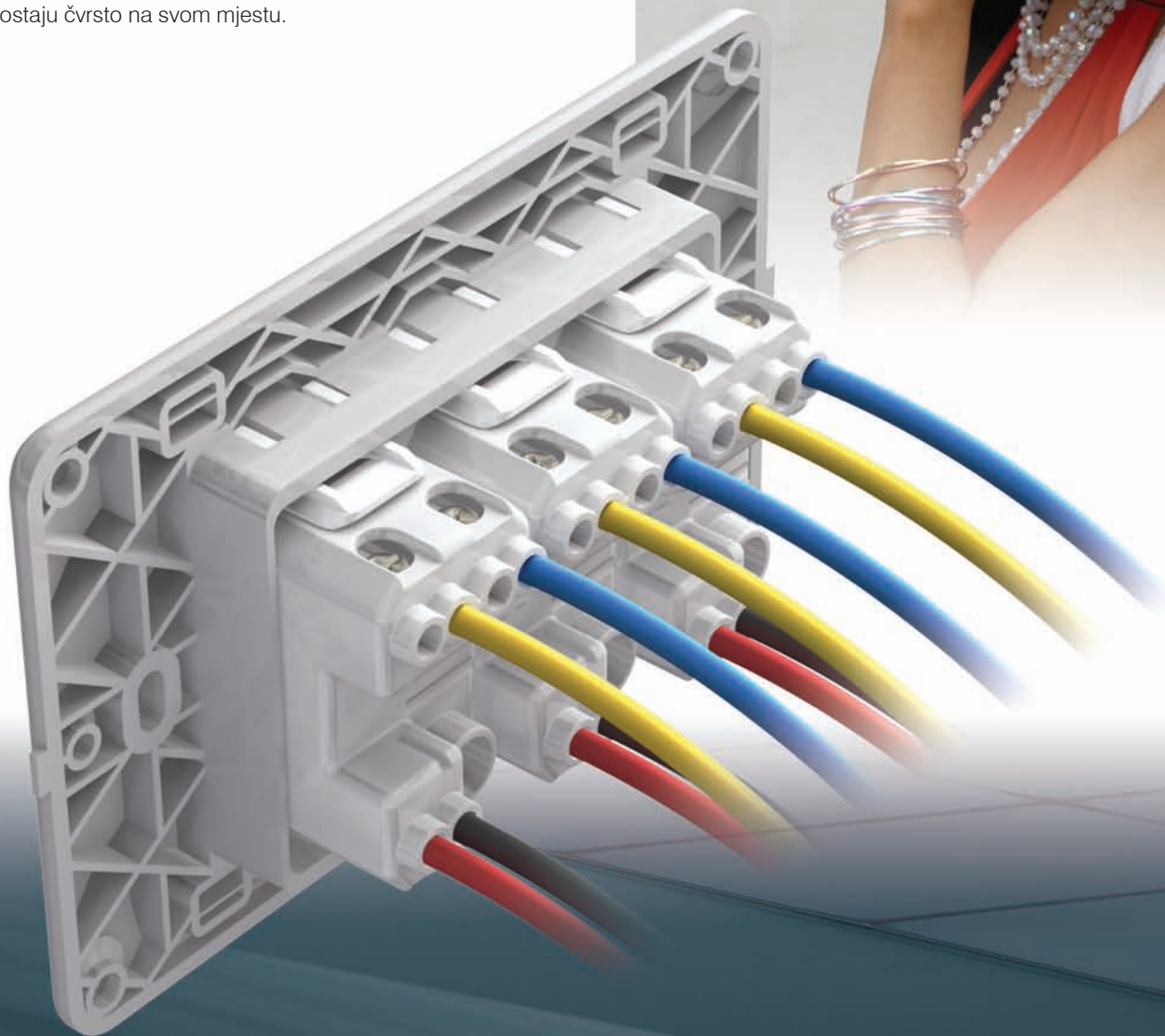
The mounting frames size 1M and 2M can be fixed with screws or claws.



# MODUL

# S I G U R N O S T

Sigurnosni zahtjevi su prilagođeni stvarnoj i ugodnoj upotrebi. Osigurali smo, da su elementi pod naponom zaštićeni od dodira vas ili vaše djece. Čak i kod grube upotrebe, sklopke i priključnice modula su konstruirane tako, da ostaju čvrsto na svom mjestu.



Sigurno priključivanje vodiča različitog promjera.

Reliable connection even when different size of cables are used.

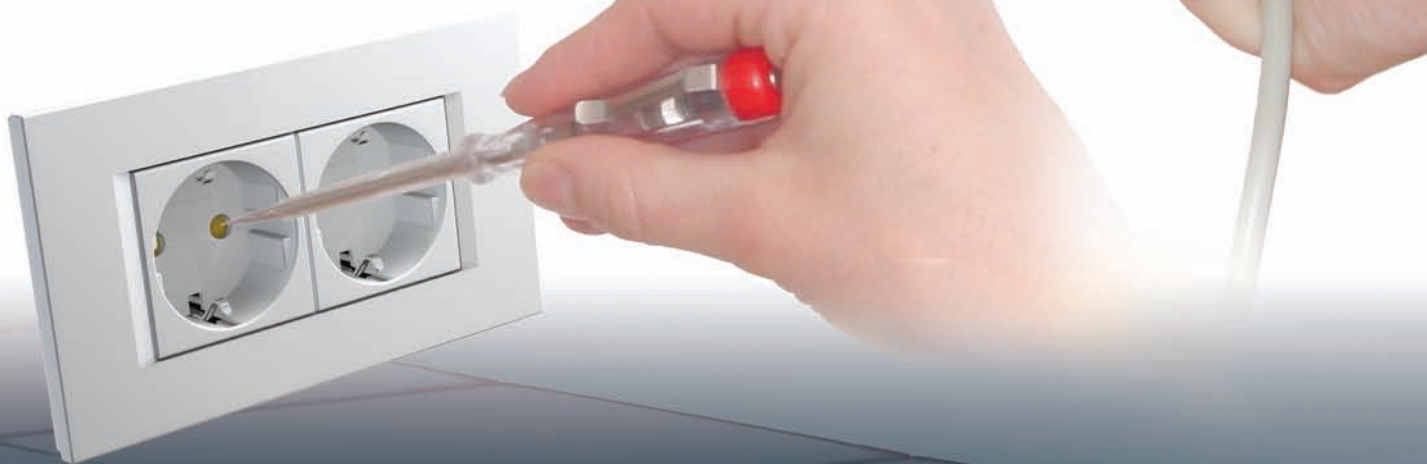


Dugi vijek trajanja priključnica i sklopki.

Long-life of switches and adequacy to the international standards.

## S A F E T Y

The safety requirements change constantly in order to assure a reliable and comfortable use of the product. Safety shutters provide protection for you and your children. The fixing system is constructed so that modules stay firmly attached in the boxes even if roughly used.



## S A F E T Y Z O N E



Nosače veličine 2M je moguće jednostavno povezati u veće skupine.

All the sockets are equipped with a special safety shutters assuring the protection to live components.



**16 AX**

kontakata

Nosače veličine 1M i 2M možemo pričvrstiti vijcima ili nožicama.

The switch is highly reliable via its silver rivets contacts.



*Symphony*  
in **TEM** modul

# MODUL<sup>®</sup> FAMILY



line



soft



MA



CUBO

③



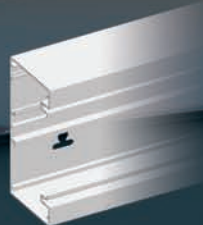
②



①



+



PW bijela-sjajna  
white-gloss



STB crna-mat  
black mat



ES srebrna-mat  
silver mat



IW bež-sjajna  
ivory gloss



### 1POL 16AX 1M



15222  
 15239  
 15394  
 15417

- 16AX/250V~, tip SM.1
- sukladno s EN-60669-1
- potreban prostor veličine 1M
- vijčano pričvršćivanje vodiča presjeka 1.5-2.5 mm<sup>2</sup>
- mogućnost zamjene tipke 1M s 2M ili s tipkom koja ima indicaciju

#### 1-WAY 16AX 1M

- 16AX/250V~, type SM.1
- in accordance with EN-60669-1
- required space of 1M
- screw contacts 1.5-2.5 mm<sup>2</sup>
- possible to exchange 1M with 2M button or with button with diffuser



### IZM 16AX 1M



15223  
 15240  
 15395  
 15418

- 16AX/250V~, tip SM.6
- sukladno s EN-60669-1
- potreban prostor veličine 1M
- vijčano pričvršćivanje vodiča presjeka 1.5-2.5 mm<sup>2</sup>
- mogućnost zamjene tipke 1M s 2M ili s tipkom koja ima indicaciju

#### 2-WAY 16AX 1M

- 16AX/250V~, type SM.6
- in accordance with EN-60669-1
- required space of 1M
- screw contacts 1.5-2.5 mm<sup>2</sup>
- possible to exchange 1M with 2M button or with button with diffuser



### KRIŽ 16AX 1M



15224  
 15241  
 15396  
 15419

- 16AX/250V~, tip SM.7
- sukladno s EN-60669-1
- potreban prostor veličine 1M
- vijčano pričvršćivanje vodiča presjeka 1.5-2.5 mm<sup>2</sup>
- mogućnost zamjene tipke 1M s 2M ili s tipkom koja ima indicaciju

#### INTERMEDIATE 16AX 1M

- 16AX/250V~, type SM.7
- in accordance with EN-60669-1
- required space of 1M
- screw contacts 1.5-2.5 mm<sup>2</sup>
- possible to exchange 1M with 2M button or with button with diffuser



### 2POL 16AX 1M



15225  
 15242  
 15430  
 15420

- 16AX/250V~, tip SM.2
- sukladno s EN-60669-1
- potreban prostor veličine 1M
- vijčano pričvršćivanje vodiča presjeka 1.5-2.5 mm<sup>2</sup>
- mogućnost zamjene tipke 1M s 2M
- označeno simbolom

#### 2POLE 16AX 1M

- 16AX/250V~, type SM.2
- in accordance with EN-60669-1
- required space of 1M
- screw contacts 1.5-2.5 mm<sup>2</sup>
- possible to exchange 1M with 2M button
- contents printed symbol



### 1POL 16AX INDIKATOR 1M



15226  
 15243  
 15431  
 15421

- 16AX/250V~, tip SM.1, - sukladno s EN-60669-1
- potreban prostor veličine 1M
- vijčano pričvršćivanje vodiča presjeka 1.5-2.5 mm<sup>2</sup>
- ugrađena indicacija za noćno ili dnevno-kontrolno osvjetljenje s tinjalicom – tinjalica nije ugrađena
- mogućnost zamjene tipke 1M s 2M

#### 1-WAY 16AX DIFFUSER 1M

- 16AX/250V~, type SM.1, - in accordance with EN-60669-1
- required space of 1M
- screw contacts 1.5-2.5 mm<sup>2</sup>
- additional night or control illumination possible with extra lamp – lamp is not included
- possible to exchange 1M with 2M button



**2POL 16AX INDIKATOR 1M**

- 15273
- 15274
- 15432
- 15422

- 16AX/250V~, tip SM.2, - sukladno s EN-60669-1
- potreban prostor veličine 1M
- vijčano pričvršćivanje vodiča presjeka 1.5-2.5 mm<sup>2</sup>
- ugrađena indikacija za noćno ili dnevno-kontrolno osvjettljenje s tinjalicom – tinjalica nije ugrađena
- mogućnost zamjene tipke 1M s 2M

**2POLE 16AX DIFFUSER 1M**

- 16AX/250V~, type SM.2, - in accordance with EN-60669-1
- required space of 1M
- screw contacts 1.5-2.5mm<sup>2</sup>
- additional night or control illumination possible with extra lamp – lamp is not included
- possible to exchange 1M with 2M button

**TIPKALO 1POL 16A 1M**

- 15238
- 15244
- 15433
- 15423

- 16A/250V~, tip SM.11
- sukladno s EN-60669-1
- potreban prostor veličine 1M
- vijčano pričvršćivanje vodiča presjeka 1.5-2.5 mm<sup>2</sup>
- mogućnost zamjene tipke 1M s 2M ili s tipkom koja ima indikaciju

**PUSH BUTTON 1-WAY 16A 1M**

- 16A/250V~, type SM.11
- in accordance with EN-60669-1
- required space of 1M
- screw contacts 1.5-2.5 mm<sup>2</sup>
- possible to exchange 1M with 2M button

**TIPKALO SVJETLO 1POL 16A 1M**

- 15228
- 15245
- 15397
- 15424

- 16A/250V~, tip SM.11, - sukladno s EN-60669-1
- potreban prostor veličine 1M
- vijčano pričvršćivanje vodiča presjeka 1.5-2.5 mm<sup>2</sup>
- ugrađena indikacija za noćno ili dnevno-kontrolno osvjettljenje s tinjalicom – tinjalica nije ugrađena
- mogućnost zamjene tipke 1M s 2M
- označeno simbolom

**PUSH BUTTON LAMP 16A 1M**

- 16A/250V~, type SM.11, - in accordance with EN-60669-1
- required space of 1M
- screw contacts 1.5-2.5 mm<sup>2</sup>
- additional night or control illumination possible with extra lamp – lamp is not included
- possible to exchange 1M with 2M button
- contents printed symbol

**TIPKALO ZVONO 1POL 16A 1M**

- 15227
- 15246
- 15398
- 15425

- 16A/250V~, tip SM.11, - sukladno s EN-60669-1
- potreban prostor veličine 1M
- vijčano pričvršćivanje vodiča presjeka 1.5-2.5 mm<sup>2</sup>
- ugrađena indikacija za noćno ili dnevno-kontrolno osvjettljenje s tinjalicom – tinjalica nije ugrađena
- mogućnost zamjene tipke 1M s 2M
- označeno simbolom

**PUSH BUTTON BELL 16A 1M**

- 16A/250V~, type SM.11, - in accordance with EN-60669-1
- required space of 1M
- screw contacts 1.5-2.5 mm<sup>2</sup>
- additional night or control illumination possible with extra lamp – lamp is not included
- possible to exchange 1M with 2M button
- contents printed symbol

**SKLOPKA ŽALUZINE 10AX 1M**

- 15438
- 15440
- 15441
- 15439

- 10AX/250V~, tip SM.62
- sukladno s EN-60669-1
- potreban prostor veličine 1M
- vijčano pričvršćivanje vodiča presjeka 1.5-2.5 mm<sup>2</sup>
- označeno simbolom

**SWITCH SHUTTERS 10AX 1M**

- 10AX/250V~, type SM.62
- in accordance with EN-60669-1
- required space of 1M
- screw contacts 1.5-2.5mm<sup>2</sup>
- contents printed symbol

**TIPKALO ŽALUZINE 10AX 1M**

- 15442
- 15444
- 15445
- 15443

- 10AX/250V~, tip SM.63
- sukladno s EN-60669-1
- potreban prostor veličine 1M
- vijčano pričvršćivanje vodiča presjeka 1.5-2.5 mm<sup>2</sup>
- označeno simbolom

**PUSH BUTTON SHUTTERS 10AX 1M**

- 10AX/250V~, type SM.63
- in accordance EN-60669-1
- required space of 1M
- screw contacts 1.5-2.5mm<sup>2</sup>
- contents printed symbol



**SKLOPKA 1POL 16AX 1M-BEZ TIPKE**

- 31336 - 16AX/250V~, tip SM.1  
 - sukladno s EN-60669-1  
 - potreban prostor veličine 1M  
 - vijčano pričvršćivanje vodiča presjeka 1.5-2.5 mm<sup>2</sup>  
 - dopuniti s tipkom 1M ili 2M

**SWITCH 1-WAY 16AX 1M-TO BE COMPLETED WITH BUTTON**

- 16AX/250V~, type SM.1  
 - in accordance with EN-60669-1  
 - required space of 1M  
 - screw contacts 1.5-2.5mm<sup>2</sup>  
 - to be completed with 1M or 2M button

**SKLOPKA IZM 16AX 1M-BEZ TIPKE**

- 31337 - 16AX/250V~, tip SM.6  
 - sukladno s EN-60669-1  
 - potreban prostor veličine 1M  
 - vijčano pričvršćivanje vodiča presjeka 1.5-2.5 mm<sup>2</sup>  
 - dopuniti s tipkom 1M ili 2M

**SWITCH 2-WAY 16AX 1M-TO BE COMPLETED WITH BUTTON**

- 16AX/250V~, type SM.6  
 - in accordance with EN-60669-1  
 - required space of 1M  
 - screw contacts 1.5-2.5mm<sup>2</sup>  
 - to be completed with 1M or 2M button

**SKLOPKA KRIŽ 16AX 1M-BEZ TIPKE**

- 31338 - 16AX/250V~, tip SM.7  
 - sukladno s EN-60669-1  
 - potreban prostor veličine 1M  
 - vijčano pričvršćivanje vodiča presjeka 1.5-2.5 mm<sup>2</sup>  
 - dopuniti s tipkom 1M ili 2M

**SWITCH INTERMEDIATE 16AX 1M-TO BE COMPLETED WITH BUTTON**

- 16AX/250V~, type SM.7  
 - in accordance with EN-60669-1  
 - required space of 1M  
 - screw contacts 1.5-2.5mm<sup>2</sup>  
 - to be completed with 1M or 2M button

**SKLOPKA 2POL 16AX 1M-BEZ TIPKE**

- 31339 - 16AX/250V~, tip SM.2  
 - sukladno s EN-60669-1  
 - potreban prostor veličine 1M  
 - vijčano pričvršćivanje vodiča presjeka 1.5-2.5 mm<sup>2</sup>  
 - dopuniti s tipkom 1M ili 2M

**SWITCH 2POLE 16AX 1M-TO BE COMPLETED WITH BUTTON**

- 16AX/250V~, type SM.2  
 - in accordance with EN-60669-1  
 - required space of 1M  
 - screw contacts 1.5-2.5mm<sup>2</sup>  
 - to be completed with 1M or 2M button

**TIPKALO 1POL 16A 1M-BEZ TIPKE**

- 31340 - 16A/250V~, tip SM.11  
 - sukladno s EN-60669-1  
 - potreban prostor veličine 1M  
 - vijčano pričvršćivanje vodiča presjeka 1.5-2.5 mm<sup>2</sup>  
 - dopuniti s tipkom 1M ili 2M

**PUSH BUTTON 1-WAY 16A 1M-TO BE COMPLETED WITH BUTTON**

- 16A/250V~, type SM.11  
 - in accordance with EN-60669-1  
 - required space of 1M  
 - screw contacts 1.5-2.5mm<sup>2</sup>  
 - to be completed with 1M or 2M button

**TIPKALO IZM 16A 1M-BEZ TIPKE**

- 31395 - 16A/250V~, tip SM.61  
 - sukladno s EN-60669-1  
 - potreban prostor veličine 1M  
 - vijčano pričvršćivanje vodiča presjeka 1.5-2.5 mm<sup>2</sup>  
 - dopuniti s tipkom 1M ili 2M

**PUSH BUTTON 2-WAY 16A 1M-TO BE COMPLETED WITH BUTTON**

- 16A/250V~, type SM.61  
 - in accordance with EN-60669-1  
 - required space of 1M  
 - screw contacts 1.5-2.5mm<sup>2</sup>  
 - to be completed with 1M or 2M button

**SKLOPKA 1POL 20A 1M-BEZ TIPKE**

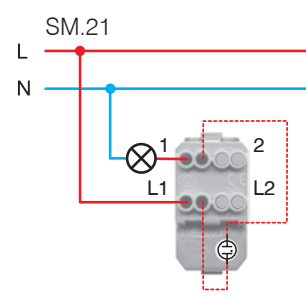
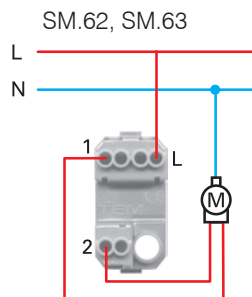
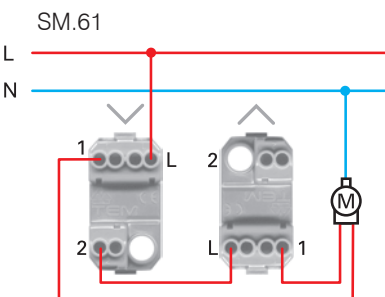
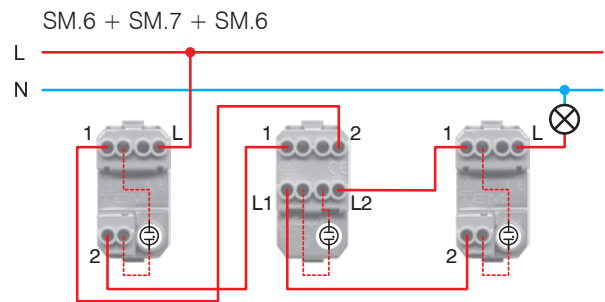
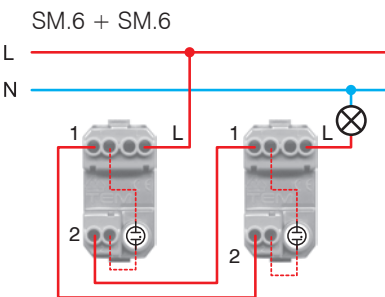
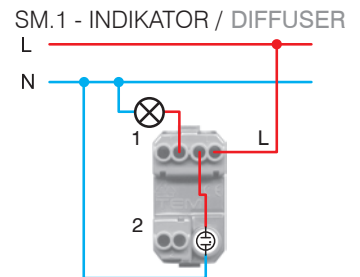
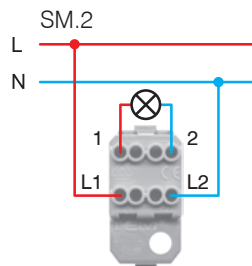
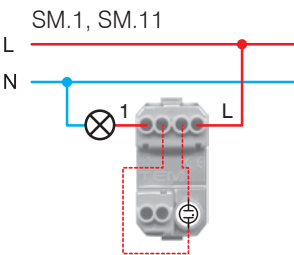
- 31455 - 20A/250V~, tip SM.21  
 - sukladno s EN-60669-1  
 - potreban prostor veličine 1M  
 - vijčano pričvršćivanje vodiča presjeka 1.5-2.5 mm<sup>2</sup>  
 - dopuniti s tipkom 1M ili 2M

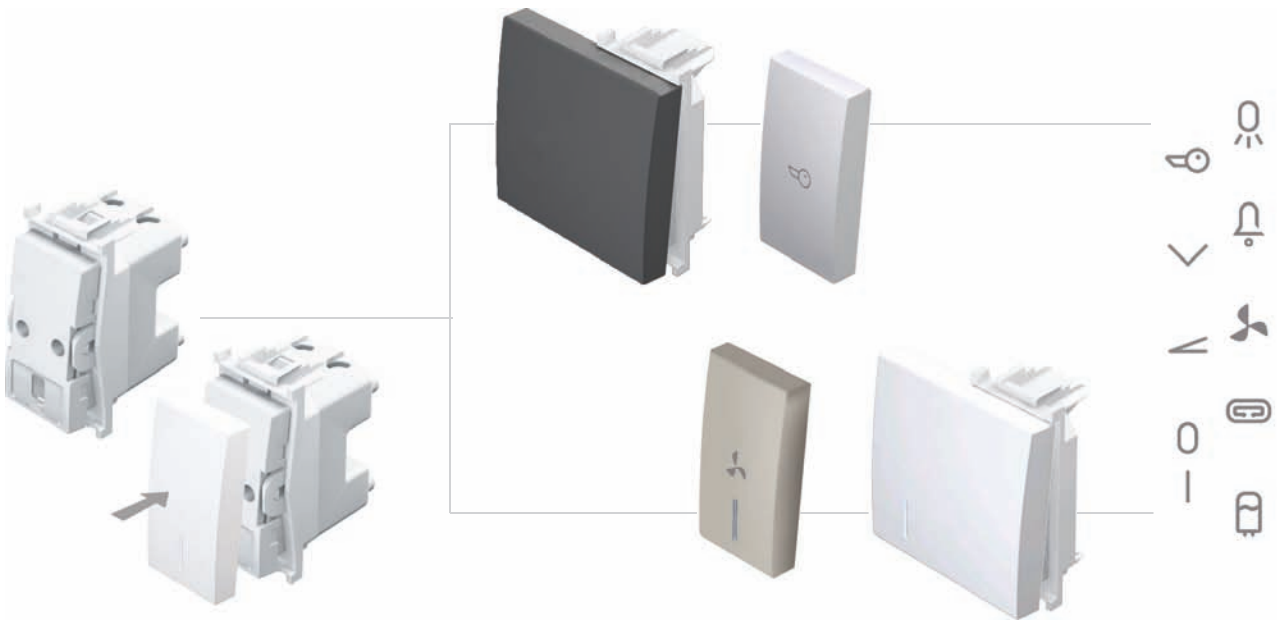
**SWITCH 1-WAY 20AX 1M-TO BE COMPLETED WITH BUTTON**

- 20A/250V~, type SM.21  
 - in accordance with EN-60669-1  
 - required space of 1M  
 - screw contacts 1.5-2.5mm<sup>2</sup>  
 - to be completed with 1M or 2M button



	38271 CRVENA / RED	<p><b>LED 12V AC/DC</b></p> <ul style="list-style-type: none"> <li>- LED tinjalica za ugradnju u sklopku ili tipkalo</li> <li>- omogućava noćno ili dnevno-kontrolno osvjetljavanje sklopke ili tipkala</li> </ul> <p><b>LED 12V AC/DC</b></p> <ul style="list-style-type: none"> <li>- LED lamp for build in to switch or push button</li> <li>- providing night and day-control illumination of switch or push button</li> </ul>	
	38270 CRVENA / RED	<p><b>LED 24V AC/DC</b></p> <ul style="list-style-type: none"> <li>- LED tinjalica za ugradnju u sklopku ili tipkalo</li> <li>- omogućava noćno ili dnevno-kontrolno osvjetljavanje sklopke ili tipkala</li> </ul> <p><b>LED 24V AC/DC</b></p> <ul style="list-style-type: none"> <li>- LED lamp for build in to switch or push button</li> <li>- providing night and day-control illumination of switch or push button</li> </ul>	
	31578 BIJELA / WHITE 31315 ZELENA / GREEN 31316 CRVENA / RED 31317 PLAVA / BLUE	<p><b>LED 220V~</b></p> <ul style="list-style-type: none"> <li>- LED tinjalica za ugradnju u sklopku ili tipkalo</li> <li>- omogućava noćno ili dnevno-kontrolno osvjetljavanje sklopke ili tipkala</li> </ul> <p><b>LED 220V~</b></p> <ul style="list-style-type: none"> <li>- LED lamp for build in to switch or push button</li> <li>- providing night and day-control illumination of switch or push button</li> </ul>	
	31314 BIJELA / WHITE	<p><b>TINJALICA 220V~</b></p> <ul style="list-style-type: none"> <li>- tinjalica za ugradnju u sklopku ili tipkalo</li> <li>- omogućava noćno ili dnevno-kontrolno osvjetljavanje sklopke ili tipkala</li> </ul> <p><b>LAMP 220V~</b></p> <ul style="list-style-type: none"> <li>- lamp for build in to switch or push button</li> <li>- providing night and day-control illumination of switch or push button</li> </ul>	





**TIPKA 1M**

- zamjenjiva tipka veličine 1M

**BUTTON 1M**

- interchangeable button 1M



- |   |   |
|---|---|
| <input type="checkbox"/> 24240              | <input type="checkbox"/> 24588            |
| <input checked="" type="checkbox"/> 24302   | <input checked="" type="checkbox"/> 24659 |
| ○ <input type="checkbox"/> 31321            | <input type="checkbox"/> 31519            |
| ○ <input checked="" type="checkbox"/> 31325 | <input checked="" type="checkbox"/> 31518 |
| ∨ <input type="checkbox"/> 31375            | <input type="checkbox"/> 31521            |
| ∨ <input checked="" type="checkbox"/> 31376 | <input checked="" type="checkbox"/> 31520 |
| ⊕ <input type="checkbox"/> 31377            | <input type="checkbox"/> 31523            |
| ⊕ <input checked="" type="checkbox"/> 31378 | <input checked="" type="checkbox"/> 31522 |
| ∧ <input type="checkbox"/> 31381            | <input type="checkbox"/> 31525            |
| ∧ <input checked="" type="checkbox"/> 31382 | <input checked="" type="checkbox"/> 31524 |

**TIPKA INDIKATOR 1M**

- zamjenjiva tipka veličina 1M  
 - upotrebljava se pri osvjetljavanju sklopke ili tipkala  
 - ugrađena indikacija za noćno ili dnevno-kontrolno osvjetljenje s tinjalicom  
 - tinjalica nije ugrađena

**BUTTON DIFFUSER 1M**

- interchangeable button 1M  
 - use for illumination of switch or push-button  
 - additional night or day-control illumination possible with extra lamp  
 - lamp is not included



- |   |   |
|---|---|
| <input type="checkbox"/> 31293              | <input type="checkbox"/> 31503            |
| <input checked="" type="checkbox"/> 31297   | <input checked="" type="checkbox"/> 31502 |
| ○ <input type="checkbox"/> 31320            | <input type="checkbox"/> 24598            |
| ○ <input checked="" type="checkbox"/> 31324 | <input checked="" type="checkbox"/> 31500 |
| ∨ <input type="checkbox"/> 31319            | <input type="checkbox"/> 24599            |
| ∨ <input checked="" type="checkbox"/> 31323 | <input checked="" type="checkbox"/> 31501 |
| ⊕ <input type="checkbox"/> 31354            | <input type="checkbox"/> 31527            |
| ⊕ <input checked="" type="checkbox"/> 31355 | <input checked="" type="checkbox"/> 31526 |
| ⊕ <input type="checkbox"/> 31348            | <input type="checkbox"/> 31529            |
| ⊕ <input checked="" type="checkbox"/> 31349 | <input checked="" type="checkbox"/> 31528 |
| ∧ <input type="checkbox"/> 31350            | <input type="checkbox"/> 31531            |
| ∧ <input checked="" type="checkbox"/> 31351 | <input checked="" type="checkbox"/> 31530 |

**TIPKA 2M**

- tipka veličine 2M zajedno s nosačem tipke  
 - upotrebljava se pri nadogradnji sklopke ili tipkala veličine 1M u veličinu 2M

**BUTTON 2M**

- interchangeable button 2M together with button carrier  
 - use for upgrade of switch or push button of size 1M to size 2M



- |   |   |
|---|---|
| <input type="checkbox"/> 24241              | <input type="checkbox"/> 31533            |
| <input checked="" type="checkbox"/> 24255   | <input checked="" type="checkbox"/> 31532 |
| ○ <input type="checkbox"/> 31312            | <input type="checkbox"/> 31535            |
| ○ <input checked="" type="checkbox"/> 31313 | <input checked="" type="checkbox"/> 31534 |
| ∨ <input type="checkbox"/> 31392            | <input type="checkbox"/> 31537            |
| ∨ <input checked="" type="checkbox"/> 31393 | <input checked="" type="checkbox"/> 31536 |
| ⊕ <input type="checkbox"/> 31379            | <input type="checkbox"/> 31539            |
| ⊕ <input checked="" type="checkbox"/> 31380 | <input checked="" type="checkbox"/> 31538 |
| ∧ <input type="checkbox"/> 31383            | <input type="checkbox"/> 31541            |
| ∧ <input checked="" type="checkbox"/> 31384 | <input checked="" type="checkbox"/> 31540 |

**TIPKA INDIKATOR 2M**

- zamjenjiva tipka veličine 2M zajedno s nosačem tipke  
 - upotrebljava se pri osvjetljavanju i nadogradnji sklopke ili tipkala veličine 1M u veličinu 2M  
 - ugrađena indikacija za noćno ili dnevno-kontrolno osvjetljenje s tinjalicom  
 - tinjalica nije ugrađena

**BUTTON DIFFUSER 2M**

- interchangeable button 2M together with button carrier  
 - use for illumination and upgrade of switch or push-button of size 1M to size 2M  
 - additional night or day-control illumination possible with extra lamp  
 - lamp is not included



- |   |   |
|---|---|
| <input type="checkbox"/> 31294              | <input type="checkbox"/> 31543            |
| <input checked="" type="checkbox"/> 31298   | <input checked="" type="checkbox"/> 31542 |
| ○ <input type="checkbox"/> 31295            | <input type="checkbox"/> 31545            |
| ○ <input checked="" type="checkbox"/> 31299 | <input checked="" type="checkbox"/> 31544 |
| ∨ <input type="checkbox"/> 31296            | <input type="checkbox"/> 31547            |
| ∨ <input checked="" type="checkbox"/> 31300 | <input checked="" type="checkbox"/> 31546 |
| ⊕ <input type="checkbox"/> 31356            | <input type="checkbox"/> 31549            |
| ⊕ <input checked="" type="checkbox"/> 31357 | <input checked="" type="checkbox"/> 31548 |
| ⊕ <input type="checkbox"/> 31358            | <input type="checkbox"/> 31551            |
| ⊕ <input checked="" type="checkbox"/> 31359 | <input checked="" type="checkbox"/> 31550 |
| ∧ <input type="checkbox"/> 31360            | <input type="checkbox"/> 31553            |
| ∧ <input checked="" type="checkbox"/> 31361 | <input checked="" type="checkbox"/> 31552 |

RTS 34.43 RVP RL<sup>(3)</sup> 40-300W ROT 1M

- 15229
- 15247
- 15399
- 15427

- rotacijski bez sklopke
- raspon: min. 40W max. 300W
- veza s izmjeničnom sklopkom **nije moguća**
- veza dva regulatora svjetla **nije dopuštena**
- potreban prostor veličine 1M
- vijčano pričvršćivanje vodiča presjeka 1.5-2.5 mm<sup>2</sup>
- ugrađeno LED osvjetljenje

RTS 34.43 RVP RL<sup>(3)</sup> 40-300W ROT 1M

- rotation control without switch
- load: min 40W max 300W
- 2-way switch combination is **not possible**
- two dimmers combination is **not allowed**
- required space of 1M
- screw contact 1.5-2.5mm<sup>2</sup>
- LED illumination



## RTS 34 DVP RL(3) 40-300W IZMJ SKLOPKA 1M

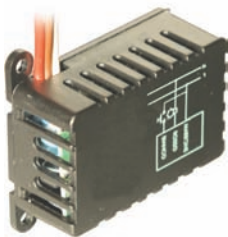


- 15230
- 15248
- 15429
- 15428

- rotacijski sa sklopkom
- raspon: min 40W max 300W
- veza s izmjeničnom sklopkom je moguća
- veza dva regulatora svjetla **nije dopuštena**
- potreban prostor veličine 1M
- vijčano pričvršćivanje vodiča presjeka 1.5-2.5 mm<sup>2</sup>
- ugrađeno LED osvjetljenje

RTS 34 DVP RL<sup>(3)</sup> 40-300W 2-WAY SWITCH 1M

- rotation control with 2-way switch
- load: min 40W max 300W
- 2-way switch combination is possible
- two dimmers combination is **not allowed**
- required space of 1M
- screw contact 1.5-2.5mm<sup>2</sup>
- LED illumination

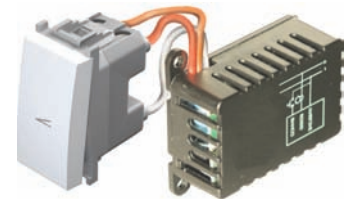


- 15720 300W RL<sup>(3)</sup>
- 15721 300W RC<sup>(2)</sup>
- 15272 500W R<sup>(1)</sup>


RTS-UNQ 40-300W TIPK  
RHUN 25-300W IGBT TIPK  
RTUN 40-500W TIPK

- za vezu s tipkalom
- veza s više tipkala je moguća
- veza dva regulatora svjetla **nije dopuštena**
- veličina: 32x50x20mm



- controlled by external push button
- several push-buttons combination is possible
- two dimmers combination is **not allowed**
- size: 32x50x20mm





(1) R - žarulja sa žarnom niti ili halogena žarulja 220V

R - classic bulbs / halogen bulbs 220V  
 220V-

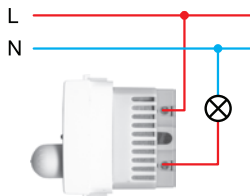
(2) RC - žarulja sa žarnom niti, halogena žarulja 220V ili elektronski transformator

RC - classic bulbs / halogen bulbs 220V / electronic transformer  
 220V- +  12V-

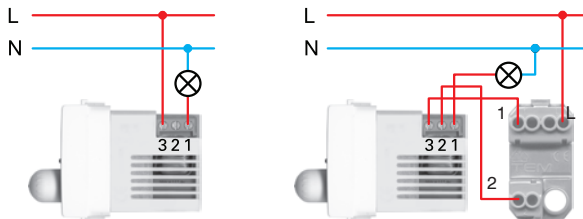
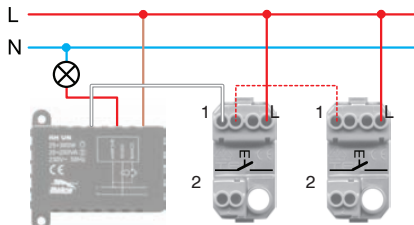
(3) RL - žarulja sa žarnom niti, halogena žarulja 220V ili elektromehanički transformator

RL - classic bulbs / halogen bulbs 220V / electromechanical transformer  
 220V- +  12V-

## RTS 34.43 RVP



## RTS 34 DVP

RTS-UNQ  
RHUN  
RTUN**PAŽNJA!**

U slučaju montaže više tipkala regulacije svjetla u istu kutiju, za svako dodatno tipkalo regulacije svjetla, maksimalna ukupna snaga se smanjuje za 10%.

**ATTENTION!**

If more dimmers are connected in one box reduce maximum common power for 10% for each dimmer.

### ŠUKO 16A SA ZAŠTITOM 2M



- 17649
- 17658
- 17831
- 17830

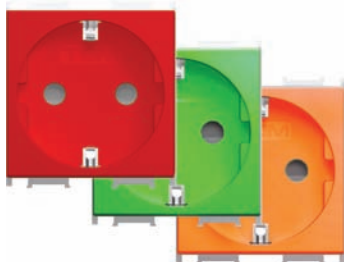
- priključnica sa zaštitnim kontaktom
- 16A/250V~, tip VT2.
- sukladno s IEC-60884-1, CEE7
- vijčano pričvršćivanje vodiča presjeka 1.5-2.5 mm<sup>2</sup>
- potreban prostor veličine 2M
- ugrađena zaštita od dodira kontakta



#### 2P+E SCHUKO 16A SHUTTERED 2M

- 2P+E schuko socket
- 16A/250V~, type VT2.
- in accordance with IEC-60884-1, CEE7
- screw contacts 1.5-2.5 mm<sup>2</sup>
- required space of 2M
- build-in child protection against any touch of contacts

### ŠUKO 16A SA ZAŠTITOM 2M SPECIJALNA



- ⊕ ⊖ ■ 17656
- ⊕ ⊖ ■ 17657
- ⊕ ⊖ ■ 17680

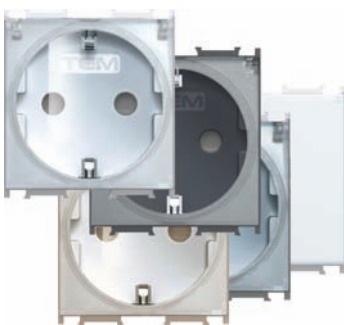
- priključnica sa zaštitnim kontaktom
- 16A/250V~, tip VT2.
- sukladno s IEC-60884-1, CEE7
- vijčano pričvršćivanje vodiča presjeka 1.5-2.5 mm<sup>2</sup>
- potreban prostor veličine 2M
- ugrađena zaštita od dodira kontakta



#### 2P+E SCHUKO 16A SHUTTERED 2M SPECIAL

- 2P+E schuko socket
- 16A/250V~, type VT2.
- in accordance with IEC-60884-1, CEE7
- screw contacts 1.5-2.5 mm<sup>2</sup>
- required space of 2M
- build-in child protection against any touch of contacts

### ŠUKO 16A SA ZAŠTITOM 2M S POKLOPCEM



- BE/PRO 17674
- STB/PRO 17685
- ES/PRO 17833
- IW/PRO 17832
- BE/BE 17683

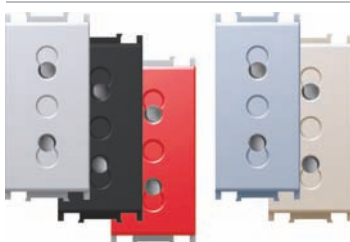
- priključnica sa zaštitnim kontaktom s poklopcem
- 16A/250V~, tip VT2.1
- sukladno s IEC-60884-1, CEE7
- vijčano pričvršćivanje vodiča presjeka 1.5-2.5 mm<sup>2</sup>
- potreban prostor veličine 2M
- ugrađena zaštita od dodira kontakta



#### 2P+E SCHUKO 16A COVERED 2M

- 2P+E schuko socket with cover
- 16A/250V~, type VT2.1
- in accordance with IEC-60884-1, CEE7
- screw contacts 1.5-2.5 mm<sup>2</sup>
- required space of 2M
- build-in child protection against any touch of contacts

### 2P 10A EURO SA ZAŠTITOM 1M



- 17686
- 17687
- 17688
- 17835
- 17834

- dvopolna priključnica bez zaštitnog kontakta
- 10A/250V~, tip VT2.3
- sukladno s IEC-60884-1, CEE7
- vijčano pričvršćivanje vodiča presjeka 1.5-2.5 mm<sup>2</sup>
- potreban prostor veličine 1M
- ugrađena zaštita od dodira kontakta



#### 2P 10A EURO SHUTTERED 1M

- 2 pole socket without earth contact
- 10A/250V~, type VT2.3
- in accordance with IEC-60884-1, CEE7
- screw contacts 1.5-2.5 mm<sup>2</sup>
- required space of 1M
- build-in child protection against any touch of contacts

### ŠUKO 16A SASTAVLJENA



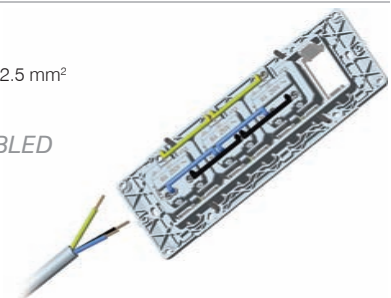
17790

17791

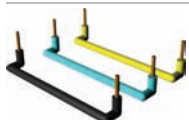
- priključnica sa zaštitnim kontaktom
- 16A/250V~
- sukladno s IEC-60884-1, CEE7
- vijčano pričvršćivanje vodiča presjeka 1.5-2.5 mm<sup>2</sup>
- ugrađena zaštita od dodira kontakta
- veznik kontakata ugrađen

#### 2P+E SCHUKO 16A PREASSEMBLED

- 2P+E schuko socket
- 16A/250V~
- in accordance with IEC-60884-1, CEE7
- screw contacts 1.5-2.5 mm<sup>2</sup>
- build-in child protection against any touch of contacts
- link wire installed



### VEZNIK KONTAKATA 1.5mm<sup>2</sup>



31469

LINK WIRE 1,5 mm<sup>2</sup>



- 17670
- 17671
- 17839
- 17838

### 2P+E F 16A SA ZAŠTITOM 2M

- priključnica sa zaštitnim kontaktom – Francuski standard
- 16A/250V~, tip VT2.2
- sukladno s IEC-60884-1, CEE7
- vijčano pričvršćivanje vodiča presjeka 1.5-2.5 mm<sup>2</sup>
- potreban prostor veličine 2M
- ugrađena zaštita od dodira kontakta

### 2P+E F 16A SHUTTERED 2M

- 2P+E socket with earth pin – French standard
- 16A/250V~, type VT2.2
- in accordance with IEC-60884-1, CEE7
- screw contacts 1.5-2.5mm<sup>2</sup>
- required space of 2M
- build-in child protection against any touch of contacts



### 2P+E F 16A SA ZAŠTITOM 2M SPECIJALNA

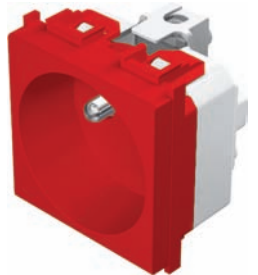
- ⊕ 17672
- ⊕ 17673
- ⊕ 17792



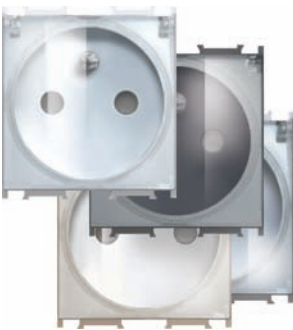
- priključnica sa zaštitnim kontaktom – francuski standard
- 16A/250V~, tip VT2.2
- sukladno s IEC-60884-1, CEE7
- vijčano pričvršćivanje vodiča presjeka 1.5-2.5 mm<sup>2</sup>
- potreban prostor veličine 2M
- ugrađena zaštita od dodira kontakta

### 2P+E F 16A SHUTTERED 2M SPECIAL USE

- 2P+E socket with earth pin – French standard
- 16A/250V~, type VT2.2
- in accordance with IEC-60884-1, CEE7
- screw contacts 1.5-2.5 mm<sup>2</sup>
- required space of 2M
- build-in child protection against any touch of contacts



### 2P+E F 16A SA ZAŠTITOM 2M S POKLOPCEM



- BE/PRO 17864
- STB/PRO 17865
- ES/PRO 17867
- IW/PRO 17866

- priključnica sa zaštitnim kontaktom – francuski standard s poklopcem
- 16A/250V~, tip VT2.5
- sukladno s IEC-60884-1, CEE7
- vijčano pričvršćivanje vodiča presjeka 1.5-2.5 mm<sup>2</sup>
- potreban prostor veličine 2M
- ugrađena zaštita od dodira kontakta

### 2P+E F 16A COVERED 2M

- 2P+E socket with earth pin – French standard with cover
- 16A/250V~, type VT2.5
- in accordance with IEC-60884-1, CEE7
- screw contacts 1.5-2.5mm<sup>2</sup>
- required space of 2M
- build-in child protection against any touch of contacts



### 2P+E 16A SA ZAŠTITOM 1M



- 17689
- 17690
- 17837
- 17836

- dvopolna priključnica – talijanski standard P17/11
- 16A/250V~, tip VT2.4
- sukladno s IEC-60884-1, CEE7
- vijčano pričvršćivanje vodiča presjeka 1.5-2.5 mm<sup>2</sup>
- potreban prostor veličine 1M
- ugrađena zaštita od dodira kontakta

### 2P+E 16A SHUTTERED 1M

- 2P+E socket – Italian standard P17/11
- 16A/250V~, type VT2.4
- in accordance with IEC-60884-1, CEE7
- screw contacts 1.5-2.5mm<sup>2</sup>
- required space of 1M
- build-in child protection against any touch of contacts



### ŠUKO 16A SA ZAŠTITOM S POKLOPCEM IP44



17701

- priključnica sa zaštitnim kontaktom s poklopcem – IP44 zaštita
- 16A/250V~, tip VT2.1
- sukladno s IEC-60884-1, CEE7
- vijčano pričvršćivanje vodiča presjeka 1.5-2.5 mm<sup>2</sup>
- za ugradnju u kutiju Ø60
- ugrađena zaštita od dodira kontakta

### 2P+E SCHUKO 16A COVERED IP44

- 2P+E schuko socket with cover – IP44 protection
- 16A/250V~, type VT2.1
- in accordance with IEC-60884-1, CEE7
- screw contacts 1.5-2.5mm<sup>2</sup>
- to build in in-wall box Ø60mm
- build-in child protection against any touch of contacts



### TV-RD-SAT ZAVRŠNA 1dB 1M

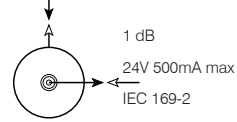


- 17650
- 17659
- 17843
- 17842

- završna priključnica u seriji ili samostalna
- potreban prostor veličine 1M
- propušta frekvenciju u rasponu 5÷2400 MHz
- prigušenje < 1 dB

#### TV-RD-SAT END-LINE 1dB 1M

- end or single socket
- required space of 1M
- frequency range 5÷2400 MHz
- reduction < 1 dB



### TV-RD-SAT PROLAZNA 10dB 1M

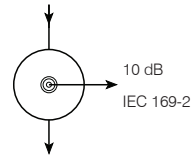


- 17651
- 17660
- 17845
- 17844

- prolazna priključnica u seriji
- potreban prostor veličine 1M
- propušta frekvenciju u rasponu 5÷2400 MHz
- prigušenje < 10 dB

#### TV-RD-SAT ON-LINE 10dB 1M

- through pass socket
- required space of 1M
- frequency range 5÷2400 MHz
- reduction < 10 dB



### TV-RD IEC M 1M



- 17693
- 17694
- 17847
- 17846

- završna priključnica samostalna - IEC standard
- stražnji konektor - F standard
- potreban prostor veličine 1M
- bez prigušenja

#### TV-RD IEC MALE 1M

- end line TV-RD socket - IEC standard
- back connector - F standard
- required space of 1M
- no reduction



### SAT F Ž 1M



- 17691
- 17692
- 17849
- 17848

- završna ženska priključnica samostalna - F standard
- potreban prostor veličine 1M
- bez prigušenja

#### SAT F FEMALE 1M

- end line satellite Female socket - F standard
- required space of 1M
- no reduction



### AUDIO 2P RCA 1M



- 17695
- 17696
- 17841
- 17840

- audio RCA priključnica - 2xRCA
- potreban prostor veličine 1M
- pričvršćivanje vodiča lemljenjem

#### AUDIO 2P RCA 1M

- audio RCA socket - 2xRCA
- required space of 1M
- soldering connection of cable



**TEL CAT3 RJ12 1x6/6 1M**

- 17776 - CAT3 KEYSTONE
- 17777 - 1xRJ12 6/6
- 17851 - sukladno s IEC-60603-7
- 17851 - potreban prostor veličine 1M
- 17850 - upotreba: telefonske komunikacije

**TEL CAT3 RJ12 1x6/6 1M**

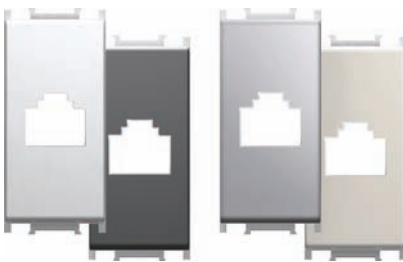
- CAT3 KEYSTONE
- 1xRJ12 6/6
- in accordance with IEC-60603-7
- required space of 1M
- use: telephone systems

**UNIV.KOM CAT5e RJ45 1x8/8 1M**

- 17681 - CAT5e KEYSTONE
- 17682 - 1xRJ45 8/8
- 17853 - sukladno s IEC-60603-7
- 17852 - potreban prostor veličine 1M
- 17852 - upotreba: računalne i telefonske komunikacije

**UNIV.COM CAT5e RJ45 1x8/8 1M**

- CAT5e KEYSTONE
- 1xRJ45 8/8
- in accordance with IEC-60603-7
- required space of 1M
- use: telephone and computer systems

**ADAPTER KOM KEYSTONE 1M**

- 24352 - adapter keystone komunikacijskih modula
- 24355 - omogućava sastavljanje komunikacijskih priključnica
- 24587 - upotrebom modula standarda keystone: AMP, Tyco,...
- 24672 - potreban prostor veličine 1M

**ADAPTER COM KEYSTONE 1M**

- adapter for keystone communication modules
- allowing optional composition of communication sockets
- in accordance with keystone fixing standard: AMP, Tyco,...
- required space of 1M



## K E Y S T O N E

**KEYSTONE MODUL CAT3**

- 38257 - CAT3, 1xRJ12 6/6  
- sukladno s IEC-60603-7  
- za ugradnju u adapter KEYSTONE  
- upotreba: telefonske komunikacije  
- kabel: AWG 24

**KEYSTONE MODULE CAT3**

- CAT3, 1xRJ12 6/6  
- in accordance with IEC-60603-7  
- require use of adapter KEYSTONE  
- use: telephone systems  
- cable: AWG 24

**KEYSTONE MODUL CAT5e**

- 38235 - CAT5e, 1xRJ45 8/8  
- sukladno s IEC-60603-7  
- za ugradnju u adapter KEYSTONE  
- upotreba: telefonske i računalne komunikacije  
- kabel: AWG 24

**KEYSTONE MODULE CAT5e**

- CAT5e, 1xRJ45 8/8  
- in accordance with IEC-60603-7  
- require use of adapter KEYSTONE  
- use: telephone and computer systems  
- cable: AWG 24

**KEYSTONE MODUL CAT6**

- 38259 - CAT6, 1xRJ45 8/8  
- sukladno s IEC-60603-7  
- za ugradnju u adapter KEYSTONE  
- upotreba: telefonske i računalne komunikacije  
- kabel: AWG 24

**KEYSTONE MODULE CAT6**

- CAT6, 1xRJ45 8/8  
- in accordance with IEC-60603-7  
- require use of adapter KEYSTONE  
- use: telephone and computer systems  
- cable: AWG 24

**KEYSTONE MODUL CAT5eS**

- 38260 - CAT5e oklopljen, 1xRJ45 8/8  
- sukladno s IEC-60603-7  
- za ugradnju u adapter KEYSTONE  
- upotreba: telefonske i računalne komunikacije  
- kabel: STP-AWG 24

**KEYSTONE MODULE CAT5eS**

- CAT5e shielded, 1xRJ45 8/8  
- in accordance with IEC-60603-7  
- require use of adapter KEYSTONE  
- use: telephone and computer systems  
- cable: STP-AWG 24

**FMT KEYSTONE MODUL CAT6a**

- 38283 - CAT6a oklopljen, 1xRJ45 8/8  
- sukladno s IEC-60603-7  
- za ugradnju u adapter KEYSTONE  
- upotreba: telefonske i računalne komunikacije  
- kabel: STP-AWG 24

**FMT KEYSTONE MODULE CAT6a**

- CAT6a shielded, 1xRJ45 8/8  
- in accordance with IEC-60603-7  
- require use of adapter KEYSTONE  
- use: telephone and computer systems  
- cable: STP-AWG 24

**TEL CAT3 RJ12 1x6/6 1M**



- 17652 - CAT3 Mini-COM
- 17663 - 1xRJ12 6/6
- 17663 - sukladno s IEC-60603-7
- 17855 - potreban prostor veličine 1M
- 17854 - upotreba: telefonske komunikacije

*TEL CAT3 RJ12 1x6/6 1M*

- CAT3 Mini-COM
- 1xRJ12 6/6
- in accordance with IEC-60603-7
- required space of 1M
- use: telephone systems



**KOM CAT5e RJ45 1x8/8 1M**



- 17653 - CAT5e Mini-COM
- 17664 - 1xRJ45 8/8
- 17664 - sukladno s IEC-60603-7
- 17857 - potreban prostor veličine 1M
- 17856 - upotreba: računalne i telefonske komunikacije

*KOM CAT5e RJ45 1x8/8 1M*

- CAT5e Mini-COM
- 1xRJ45 8/8
- in accordance with IEC-60603-7
- required space of 1M
- use: telephone and computer systems



**ADAPTER KOM MINI-COM 1M**



- 24247 - adapter komunikacijskih modula
- 24263 - omogućava sastavljanje komunikacijskih priključnica
- 24263 - upotrebom modula PANDUIT Mini-COM
- 24674 - potreban prostor veličine 1M
- 24673

*ADAPTER KOM MINI-COM 1M*

- adapter for communication modules
- allowing optional composition of communication sockets in accordance with PANDUIT Mini-COM standard
- required space of 1M



P A N D U I T - M i n i - C O M

**MINI-COM MODUL CAT3**



- 38194 - CAT3, 1xRJ12 6/6  
 - sukladno s IEC-60603-7  
 - za ugradnju u adapter Mini-COM  
 - upotreba: telefonske i računalne komunikacije  
 - kabel: AWG 24

*MINI-COM MODULE CAT3*

- CAT3, 1xRJ12 6/6
- in accordance with IEC-60603-7
- require use of adapter Mini-COM
- use: telephone systems
- cable: AWG 24

**MINI-COM MODUL CAT5e**



- 38191 - CAT5e, 1xRJ45 8/8  
 - sukladno s IEC-60603-7  
 - za ugradnju u adapter Mini-COM  
 - upotreba: telefonske i računalne komunikacije  
 - kabel: AWG 24

*MINI-COM MODULE CAT5e*

- CAT5e, 1xRJ45 8/8
- in accordance with IEC-60603-7
- require use of adapter Mini-COM
- use: telephone and computer systems
- cable: AWG 24

**MINI-COM MODUL CAT6**



- 38193 - CAT6, 1xRJ45 8/8  
 - sukladno s IEC-60603-7  
 - za ugradnju u adapter Mini-COM  
 - upotreba: telefonske i računalne komunikacije  
 - kabel: AWG 24

*MINI-COM MODULE CAT6*

- CAT6, 1xRJ45 8/8
- in accordance with IEC-60603-7
- require use of adapter Mini-COM
- use: telephone and computer systems
- cable: AWG 24

**MINI-COM MODUL CAT5eS**



- 38192 - CAT5e oklopljen, 1xRJ45 8/8  
 - sukladno s EN-55022, IEC-60603-7  
 - za ugradnju u adapter Mini-COM  
 - upotreba: telefonske i računalne komunikacije  
 - kabel: STP-AWG 24

*MINI-COM MODULE CAT5eS*

- CAT5e shielded, 1xRJ45 8/8
- in accordance with EN-55022, IEC-60603-7
- require use of adapter Mini-COM
- use: telephone and computer systems
- cable: STP-AWG 24

**MINI-COM MODUL CAT6S**



- 38263 - CAT6 oklopljen, 1xRJ45 8/8  
 - sukladno s EN-55022, IEC-60603-7  
 - za ugradnju u adapter Mini-COM  
 - upotreba: telefonske i kompjutorske komunikacije  
 - kabel: STP-AWG 24

*MINI-COM MODULE CAT6S*

- CAT6 shielded, 1xRJ45 8/8
- in accordance with EN-55022, IEC-60603-7
- require use of adapter Mini-COM
- use: telephone and computer systems
- cable: STP-AWG 24

**MINI-COM MODUL SLIJEPI ELEMENT**



- 38198 - modul za prazna mjesta  
 - za ugradnju u adapter Mini-COM

*MINI-COM MODULE BLANK*

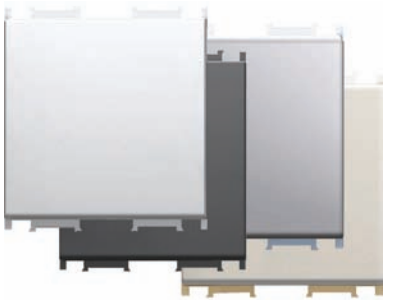
- blank modul
- require use of adapter Mini-COM

**SLIJEPI ELEMENT MODUL 1M**

- 24246 - dodatni modul za popunjavanje praznih mjesta, predviđenih za moguću nadogradnju
- 24256 - potreban prostor veličine 1M
- 24581
- 24678

**BLANK 1M**

- additional blank modul for filling up empty spaces, required for afterwards filling
- required space of 1M

**SLIJEPI ELEMENT MODUL 2M**

- 24658 - dodatni modul za popunjavanje praznih mjesta, predviđenih za moguću nadogradnju
- 24685 - potreban prostor veličine 2M
- 24684
- 24681

**BLANK 2M**

- additional blank modul for filling up empty spaces, required for afterwards filling
- required space of 2M

**ADAPTER KOM MULTIMEDIA LK PREMIUM 1M**

- 24466 - adapter komunikacijskih modula
- 24481 - omogućava sastavljanje komunikacijskih priključnica upotrebom modula LK eLine / BKS NewLine
- 24845 - potreban prostor veličine 1M
- 24844 - komunikacijski modul nije ugrađen

**ADAPTER COM MULTIMEDIA LK PREMIUM 1M**

- adapter for communication modules
- allowing optional composition of communication sockets in accordance with LK eLine / BKS NewLine standard
- required space of 1M
- communication module not included

**IR SKLOPKA ZA MODUL 230V 1M**

- 38238 - 230 V~, izlaz: relej NO 6A 230V~; tip 14180
- 38274 - sukladno s EN 60669-2-1, kut reagiranja: 110°/36°/8m
- 38275 - potreban prostor veličine 1M
- 38276 - nije primjerena za fluorescentnu rasvjetu
- podesivo vrijeme isklapa 15-180s, podesiva svjetlosna osjetljivost

**IR SWITCH FOR MODUL 230V 1M**

- 230 V~, relay output NO 6A 230V~; type 14180
- in accordance with EN-60669-2-1, angle of detection: 110°/36°/8m
- required space of 1M
- not suitable for direct control of fluorescent lamps
- time delay adjustable 15-180s, twilight threshold adjustment

**TIPKALO POTEZNO S UZICOM IZM 16A 1M**

- 15454 - 16A/250V~, tip SM.61, uzica dužine 1.5m
- 15455 - sukladno s EN-60669-1
- 15456 - potreban prostor veličine 1M
- 15457 - vijčano pričvršćivanje vodiča presjeka 1.5-2.5 mm<sup>2</sup>
- ugrađena indikacija za noćno ili dnevno-kontrolno osvjjetljenje s tinjalicom – tinjalica nije ugrađena

**PUSH BUTTON CORD-OPERATED 2-WAY 16A 1M**

- 16A/250V~, type SM.61, cord length 1.5m
- in accordance with EN-60669-1
- required space of 1M
- screw contacts 1.5-2.5mm<sup>2</sup>
- additional night or control illumination possible with extra lamp – lamp is not included

**UNIVERZALNI KUPAONSKI SET**

- 15252 - 3x20A/250V~, tip 3xSM.21, - sukladno s EN-60669-1
- 15277 - univerzalna montaža, razmak pričvršćivanja od 108-135mm
- tinjalice i vijci za pričvršćivanje su ugrađeni
- vijčano pričvršćivanje vodiča presjeka 1.5-2.5 mm<sup>2</sup>
- označeno simbolima
- instalacijska kutija nije priložena

**UNIVERSAL SWITCH COMBINATION**

- 3x20A/250V~, type 3xSM.21, - in accordance with EN-60669-1
- univerzal mounting, fitting dimension 108-135mm
- lamps and mounting screws are included
- screw contacts 1.5-2.5mm<sup>2</sup>
- contents printed symbol
- mounting box is not included





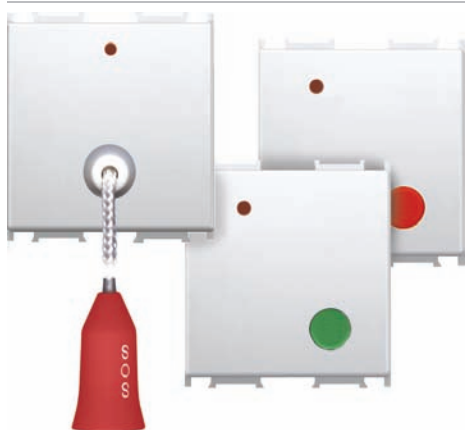
- 38279
- 38280
- 38281
- 38282

### ELEKTRONSKA BRAVA NA OTISAK PRSTA ARX1 2M

- CE standard, RoHS prilagodljivost
- termalni senzor, 500 korisnika
- programiranje s dvije tipke
- 3 kolor diode za signalizaciju
- direktno povezivanje na 220V ili 110V
- 64-bitna enkripcija, 1 relejni izlaz
- ugrađena u nosač veličine 2M + vanjska jedinica

#### FINGERPRINT LOCK ARX1 2M

- thermal sensor, 500 users
- 2 key programming
- 3 colours LED signalization
- in accordance with RoHS and CE, 220V or 110 V supply
- 64bit encryption, 1 relay output
- installed in mounting frame 2M + external modul



### SOS SIGNALIZACIJA – KLINIKOM 2M

- sistem SOS signalizacije u bolnicama, domovima umirovljenika, hotelima,...
- potreban prostor veličine 2M
- više informacija na [www.promon.si](http://www.promon.si)
- sukladno s EN-55022

#### SOS SIGNALIZATION – KLINIKOM 2M

- SOS signalization system for hospitals, home for the aged, hotels,...
- required space of 2M
- more informations at [www.promon.si](http://www.promon.si)
- in accordance with EN-55022



38239

- 230V~, izlaz: relej 6A 230V~, tip 14445
- sukladno s EN 60730-1, EN 60730-2-7, EN 60730-2-9
- potreban prostor veličine 2M
- regulacija: ON/OFF, 0 do +35°C, programiranje: 24 sata/7 dana
- jezik: engleski, njemački, talijanski, francuski, španjolski

#### ELECTRONIC CHRONOTERMOSTAT 2M

- 230V~, relay output 6A 230V~, type 14445
- in accordance with EN-60730-1, EN-60730-2-7, EN-60730-2-9
- required space of 2M
- regulation: ON/OFF, 0 to +35°C, programming: 24 hour/7 days
- language: English, German, Italian, French, Spanish



38249

- utičnica za brijajući aparat s izolacijskim transformatorom 20VA
- tip 14290
- napajanje: 230V~ 50-60Hz, izlaz: Europlug 2.5A/230V~ i American plug 15A/125V~
- sukladno s EN 61558-2-5
- potreban prostor veličine 3M

#### SHAVER SUPPLY UNIT 3M

- shaver supply unit with isolating transformer 20VA
- type 14290
- supply voltage: 250V~, output: Europlug 2.5A/230V~ and American plug 15A/125V~
- in accordance with EN-61558-2-5
- required space of 3M



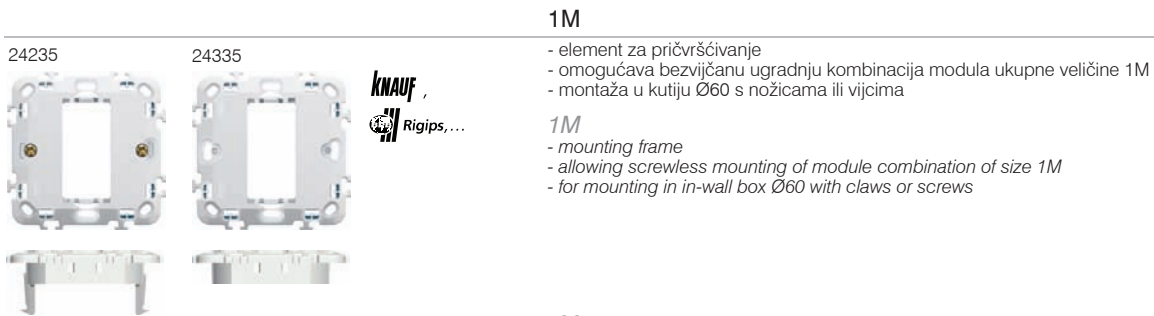
38250

### SKLOPKA KARTIČNA 3M

- elektronska sklopka za standardnu ISO karticu, tip 14464
- izlaz: relej 16A/250V~, napajanje: 230V~, 24V~ ili 24V DC
- zadržka isklopa 50 sekundi
- sukladno s EN 61000-6-1, EN 61000-6-3
- potreban prostor veličine 3M
- kartica nije priložena

#### BADGE (POWER SAVER CARD) SWITCH 3M

- electronic switch activated by standard ISO card, type 14464
- change-over relay output 16A/250V~, supply voltage: 230V~, 24V~ or 24V DC
- switch off delay – 50 seconds
- in accordance with EN-61000-6-1, EN-61000-6-3
- required space of 3M
- card is not included

**1M**

- element za pričvršćivanje
- omogućava bezvijčanu ugradnju kombinacija modula ukupne veličine 1M
- montaža u kutiju Ø60 s nožicama ili vijcima

**1M**

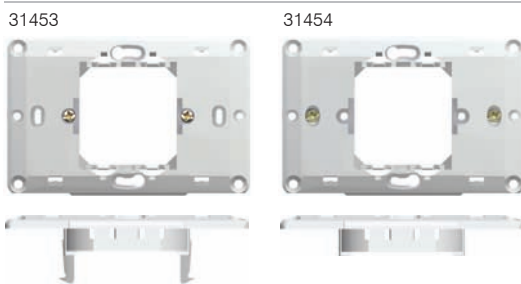
- mounting frame
- allowing screwless mounting of module combination of size 1M
- for mounting in in-wall box Ø60 with claws or screws

**2M**

- element za pričvršćivanje
- omogućava bezvijčanu ugradnju kombinacija modula ukupne veličine 2M
- montaža u kutiju Ø60 s nožicama ili vijcima
- moguće vertikalno i horizontalno nizaње za 2x2M i 3x2M kombinacije

**2M**

- mounting frame
- allowing screwless mounting of module combination of size 2M
- for mounting in in-wall box Ø60 with claws or screws
- possible horizontal and vertical combination of 2x2M in 3x2M

**2/3M**

- element za pričvršćivanje
- omogućava bezvijčanu ugradnju kombinacija modula ukupne veličine 2M
- montaža: 31454 u pravokutnu kutiju veličine 3M s vijcima
- 31453 u kutiju Ø60 s nožicama ili vijcima

**2/3M**

- mounting frame
- allowing screwless mounting of module combination of size 2M
- for mounting: 31454 in square in-wall box 3M with enclosed screws
- 31453 in-wall box Ø60 with claws or screws

**3M**

- element za pričvršćivanje
- omogućava bezvijčanu ugradnju kombinacija modula ukupne veličine 3M
- montaža u pravokutnu kutiju 3M s vijcima

**3M**

- mounting frame
- allowing screwless mounting of module combination of size 3M
- for mounting in square in-wall box 3M with enclosed screws

**4M**

- element za pričvršćivanje
- omogućava bezvijčanu ugradnju kombinacija modula ukupne veličine 4M
- montaža u pravokutnu kutiju 4M s vijcima

**4M**

- mounting frame
- allowing screwless mounting of module combination of size 4M
- for mounting in square in-wall box 4M with enclosed screws

**7M**

- element za pričvršćivanje
- omogućava bezvijčanu ugradnju kombinacija modula ukupne veličine 7M
- montaža u pravokutnu kutiju 7M s vijcima

**7M**

- mounting frame
- allowing screwless mounting of module combination of size 7M
- for mounting in square in-wall box 7M with enclosed screws

**VIJAK 35//50**

- duži vijak za nosač
- omogućava montažu nosača na kutiju u zidu s naknadno nanesenim slojevima (žbuka, keramičke pločice, itd.)

**SCREW 35//50**

- longer screw for mounting frame
- allowing mounting over thick foundation



	PW	24249
	NB	24268
	IW	24326
	ES	24267
	SG	24264
	IB	24265
	MG	24266

**1M**

- dekorativni okvir za spajanje kombinacija modula i nosača 1M

*1M*

- decorative cover plate for combination of module and mounting frame 1M



	PW	24253
	NB	24273
	IW	24327
	ES	24272
	SG	24269
	IB	24270
	MG	24271

**2M**

- dekorativni okvir za spajanje kombinacija modula i nosača 2M

*2M*

- decorative cover plate for combination of module and mounting frame 2M



	PW	24379
	NB	24454
	IW	24455
	ES	24453
	SG	24450
	IB	24451
	MG	24452

**2/3M**

- dekorativni okvir za spajanje kombinacija modula i nosača 2/3M

*2/3M*

- decorative cover plate for combination of module and mounting frame 2/3M



	PW	24237
	NB	24278
	IW	24328
	ES	24277
	SG	24274
	IB	24275
	MG	24276

**3M**

- dekorativni okvir za spajanje kombinacija modula i nosača 3M

*3M*

- decorative cover plate for combination of module and mounting frame 3M



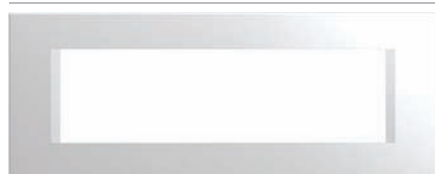
	PW	24238
	NB	24283
	IW	24329
	ES	24282
	SG	24279
	IB	24280
	MG	24281

**4M**

- dekorativni okvir za spajanje kombinacija modula i nosača 4M

*4M*

- decorative cover plate for combination of module and mounting frame 4M



	PW	24239
	NB	24288
	IW	24330
	ES	24287
	SG	24284
	IB	24285
	MG	24286

**7M**

- dekorativni okvir za spajanje kombinacija modula i nosača 7M

*7M*

- decorative cover plate for combination of module and mounting frame 7M



	PW	24252
	NB	24293
	IW	24331
	ES	24292
	SG	24289
	IB	24290
	MG	24291

**2x2M**

- dekorativni okvir za spajanje kombinacija modula i nosača 2M ukupne veličine 2x2M vertikalno ili horizontalno

*2x2M*

- decorative cover plate for combination of modules and mounting frame 2M for 2x2M combination horizontal or vertical



	PW	24250
	NB	24298
	IW	24332
	ES	24297
	SG	24294
	IB	24295
	MG	24296

**3x2M**

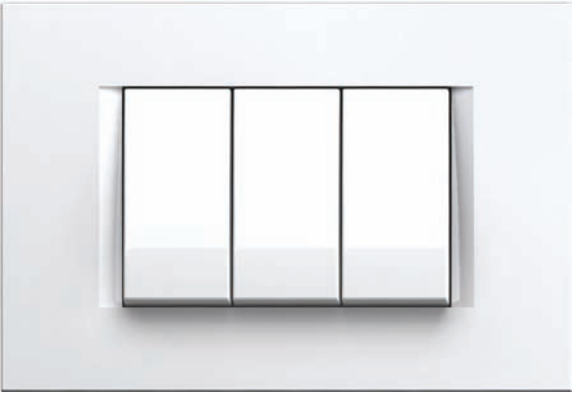
- dekorativni okvir za spajanje kombinacija modula i nosača 2M ukupne veličine 3x2M vertikalno ili horizontalno

*3x2M*

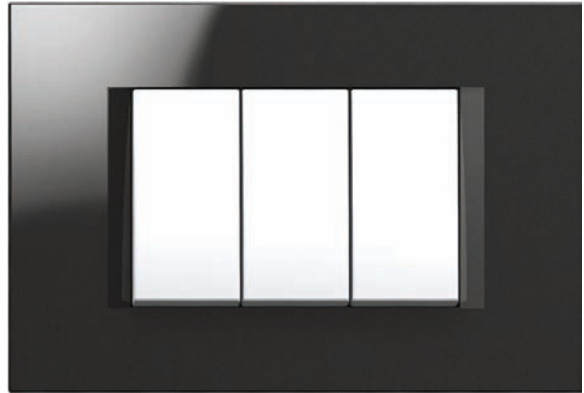
- decorative cover plate for combination of modules and mounting frame 2M for 3x2M combination horizontal or vertical

## COVER PLATES

POLAR WHITE - PW  
bijela - sjajna



NIGHT BLACK - NB  
crna - sjajna



IVORY WHITE - IW  
bež - sjajna



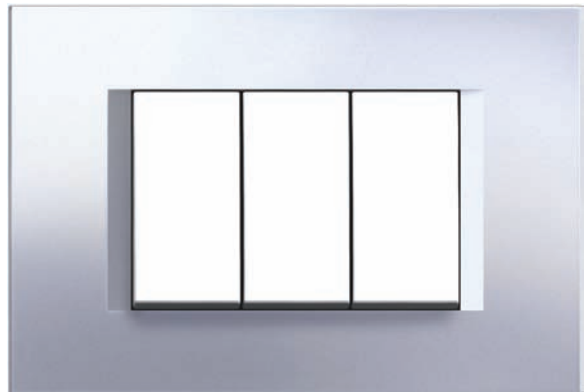
ELOX SILVER - ES  
metalik srebrna - mat



SAND GOLD - SG  
metalik zlatna - mat



IMPULSE BLUE - IB  
metalik plava - mat



MINT GREEN - MG  
metalik zelena - mat





	PW	24549
	NB	24725
	IW	24701
	ES	24709
	SG	24717
	STB	24757
	WG	24733

**1M**

- dekorativni okvir za spajanje kombinacija modula i nosača 1M

*1M*

- decorative cover plate for combination of module and mounting frame 1M



	PW	24550
	NB	24726
	IW	24702
	ES	24710
	SG	24718
	STB	24758
	WG	24734

**2M**

- dekorativni okvir za spajanje kombinacija modula i nosača 2M

*2M*

- decorative cover plate for combination of modules and mounting frame 2M



	PW	24551
	NB	24727
	IW	24703
	ES	24711
	SG	24719
	STB	24759
	WG	24735

**2/3M**

- dekorativni okvir za spajanje kombinacija modula i nosača 2/3M

*2/3M*

- decorative cover plate for combination of modules and mounting frame 2/3M



	PW	24552
	NB	24728
	IW	24704
	ES	24712
	SG	24720
	STB	24760
	WG	24736

**3M**

- dekorativni okvir za spajanje kombinacija modula i nosača 3M

*3M*

- decorative cover plate for combination of modules and mounting frame 3M



	PW	24553
	NB	24729
	IW	24705
	ES	24713
	SG	24721
	STB	24761
	WG	24737

**4M**

- dekorativni okvir za spajanje kombinacija modula i nosača 4M

*4M*

- decorative cover plate for combination of modules and mounting frame 4M



	PW	24554
	NB	24730
	IW	24706
	ES	24714
	SG	24722
	STB	24762
	WG	24738

**7M**

- dekorativni okvir za spajanje kombinacija modula i nosača 7M

*7M*

- decorative cover plate for combination of modules and mounting frame 7M



	PW	24555
	NB	24731
	IW	24707
	ES	24715
	SG	24723
	STB	24763
	WG	24739

**2x2M**

- dekorativni okvir za spajanje kombinacija modula i nosača 2M ukupne veličine 2x2M vertikalno ili horizontalno

*2x2M*

- decorative cover plate for combination of modules and mounting frame 2M for 2x2M combination horizontal or vertical



	PW	24556
	NB	24732
	IW	24708
	ES	24716
	SG	24724
	STB	24764
	WG	24740

**3x2M**

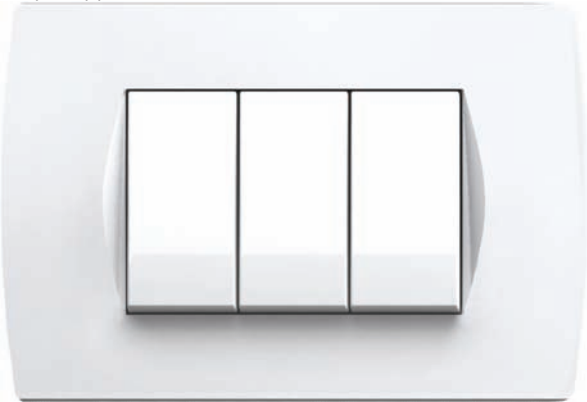
- dekorativni okvir za spajanje kombinacija modula i nosača 2M ukupne veličine 3x2M vertikalno ili horizontalno

*3x2M*

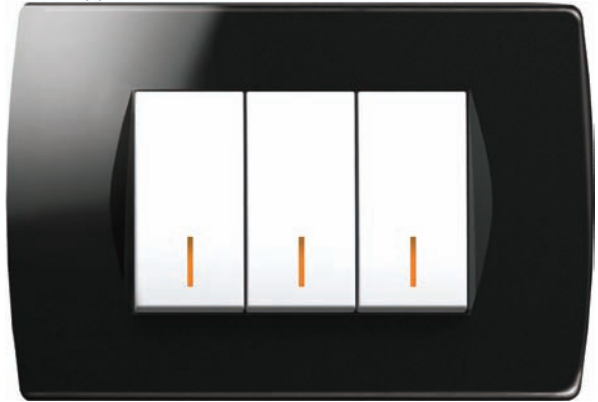
- decorative cover plate for combination of modules and mounting frame 2M for 3x2M combination horizontal or vertical

## COVER PLATES

POLAR WHITE - PW  
bijela - sjajna



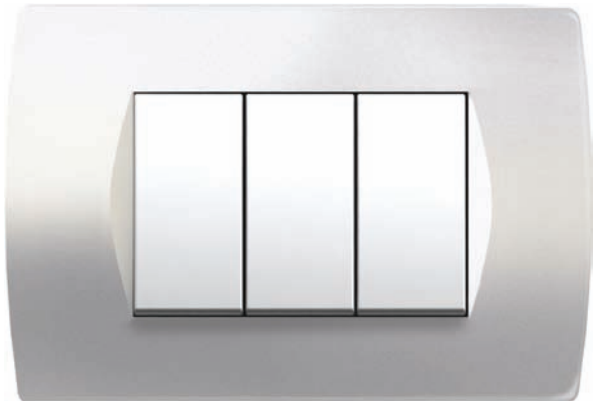
NIGHT BLACK - NB  
crna - sjajna



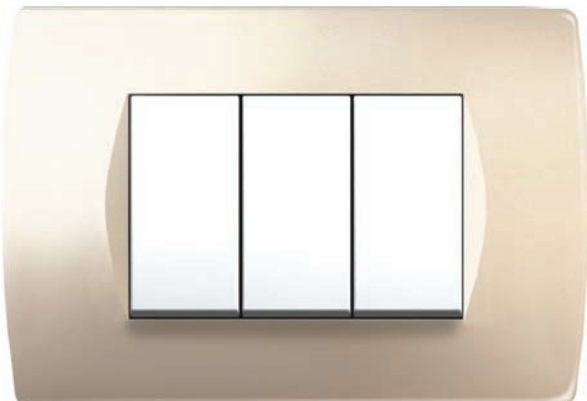
IVORY WHITE - IW  
bež - sjajna



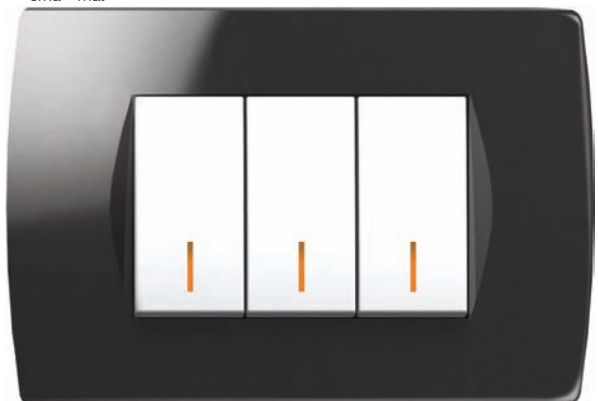
ELOX SILVER - ES  
metalik srebrna - mat



SAND GOLD - SG  
metalik zlatna - mat



SOFT TOUCH BLACK - STB  
crna - mat



WENGE - WG  
wenge - mat



# S I S T E M P R A V O K U T N I H K U T I J A

15234

**PM 3**

- veličina 95x58mm
- dubina 49mm
- omogućava montažu kombinacije modula ukupne veličine 3M
- IP20, 650°C, 500V~
- sukladno s DIN 49073

**PM 3**

- size 95x58mm
- depth 49mm
- allowing fitting of module combination of size 3M
- IP20, 650°C, 500V~
- in accordance with DIN 49073



15260

**VM 3**

- veličina 112x68mm, dubina 50mm
- izbušiti rupe: 2xØ68mm na razmaku od 45mm
- omogućava montažu kombinacije modula ukupne veličine 3M
- IP30, 850°C, 400V~
- sukladno s DIN 49073
- montaža s metalnim nožicama

**VM 3**

- size 112x68mm, depth 50mm
- cutting holes: 2x diameter 68mm on distance 45mm
- allowing fitting of module combination of size 3M
- IP30, 850°C, 400V~
- in accordance with DIN 49073
- mounting with metal claws



**KNAUF**, Rigips,...

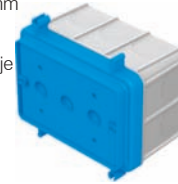
15356

**BM 3**

- kutija za ugradnju u beton
- veličina 97x66mm
- dubina 63mm
- omogućava montažu kombinacije modula ukupne veličine 3M
- IP30, 650°C, 500V~
- sukladno s DIN 49073

**BM 3**

- box for concrete wall fitting
- size 97x66mm
- depth 63mm
- allowing fitting of module combination of size 3M
- IP30, 650°C, 500V~
- in accordance with DIN 49073



15235

**PM 4**

- veličina 120x58mm
- dubina 49mm
- omogućava montažu kombinacije modula ukupne veličine 4M
- IP20, 650°C, 500V~
- sukladno s DIN 49073

**PM 4**

- size 120x58mm
- depth 49mm
- allowing fitting of module combination of size 4M
- IP20, 650°C, 500V~
- in accordance with DIN 49073



15261

**VM 4**

- veličina 137x68mm, dubina 50mm
- izbušiti rupe: 2xØ68mm na razmaku od 70mm
- omogućava montažu kombinacije modula ukupne veličine 4M
- IP30, 850°C, 400V~
- sukladno s DIN 49073
- montaža s metalnim nožicama

**VM 4**

- size 137x68mm, depth 50mm
- cutting holes: 2x diameter 68mm on distance 70mm
- allowing fitting of module combination of size 4M
- IP30, 850°C, 400V~
- in accordance with DIN 49073
- mounting with metal claws



**KNAUF**, Rigips,...

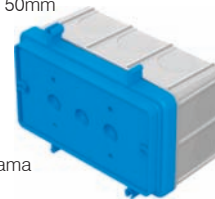
15358

**BM 4**

- kutija za ugradnju u beton
- veličina 121x66mm
- dubina 63mm
- omogućava montažu kombinacije modula ukupne veličine 4M
- IP30, 650°C, 500V~
- sukladno s DIN 49073

**BM 4**

- box for concrete wall fitting
- size 121x66mm
- depth 63mm
- allowing fitting of module combination of size 4M
- IP30, 650°C, 500V~
- in accordance with DIN 49073



15236

**PM 7**

- veličina 173x58mm
- dubina 49mm
- omogućava montažu kombinacije modula ukupne veličine 7M
- IP20, 650°C, 500V~
- sukladno s DIN 49073

**PM 7**

- size 173x58mm
- depth 49mm
- allowing fitting of module combination of size 7M
- IP20, 650°C, 500V~
- in accordance with DIN 49073



15262

**VM 7**

- veličina 190x68mm, dubina 50mm
- izbušiti rupe: 2xØ68mm na razmaku od 120mm
- omogućava montažu kombinacije modula ukupne veličine 7M
- IP30, 850°C, 400V~
- sukladno s DIN 49073
- montaža s metalnim nožicama

**VM 7**

- size 190x68mm, depth 50mm
- cutting holes: 2x diameter 68mm on distance 120mm
- allowing fitting of module combination of size 7M
- IP30, 850°C, 400V~
- in accordance with DIN 49073
- mounting with metal claws



**KNAUF**, Rigips,...



### ZAŠITNI POKLOPAC KUTIJE



24299  
24300  
24301

3M  
4M  
7M

- zaštitni i signalni poklopac pravokutne kutije PM3, PM4 i PM4

#### SIGNAL COVER PM

- protective and marking cover for PM3, PM4 and PM7 boxes

### DEKORATIVNI POKLOPAC KUTIJE



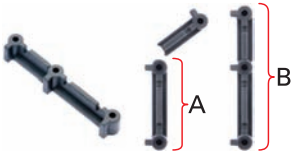
PM3 24371  
PM4 24372

- zaštitni i signalni poklopac pravokutne kutije 3M i 4M  
- vijci su priloženi

#### DECORATIVE COVER

- decorative cover for rectangular boxes 3M and 4M  
- screws are included

### VEZNI ČLAN KUTIJE

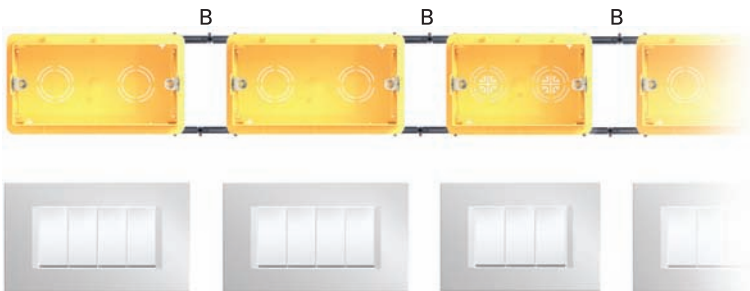


15237

- omogućava vertikalno (B) i horizontalno (A)  
sastavljanje većeg broja kutija PM3, PM4 i PM7  
- za horizontalni niz upotrebljavati kutije iste veličine  
- za vertikalni niz kutije mogu biti različite veličine

#### DISTANCE PIECE OF WALL BOX

- for vertical (B) and horizontal (A) fitting of box  
combination PM3, PM4 and PM7  
- for vertical combination boxes must be equal size  
- for horizontal combination boxes can be different sizes



15060

**PO SM60-01 PLITKA**



- promjer 60mm, dubina 40mm
- moguća montaža na 71mm
- IP20, 650°C, 500V~
- sukladno s DIN 49073 i VDE 0606

**PO SM60-01 SHALLOW**

- diameter 60mm, depth 40mm
- fitting for boxes combination – distance 71mm
- IP20, 650°C, 500V~
- in accordance with DIN 49073 and VDE 0606

15057

**ZAŠTITNI POKLOPAC SM60-05**



- zaštitni i signalni poklopac za kutije Ø60mm

**SIGNAL COVER SM60-05**

- protective and marking cover for Ø60mm wall boxes

15059

**PO SM60-06 DUBOKA**



- promjer 60mm, dubina 60mm
- moguća montaža na 71mm
- IP20, 650°C, 500V~
- sukladno s DIN 49073 i VDE 0606

**PO SM60-06 JUNCTION**

- diameter 60mm, depth 60mm
- fitting for boxes combination – distance 71mm
- IP20, 650°C, 500V~
- in accordance with DIN 49073 and VDE 0606

15058

**POKLOPAC ZA KUTIJU SM60**



- dekorativni poklopac za kutije Ø60mm

**SPRING COVER SM60**

- decorative cover for Ø60mm wall boxes

15053

**PRODUŽETAK SM60-03**



- za vertikalno povezivanje kutija SM60-06 ili SM60-01 na razmak od 91mm

**DISTANCE PIECE SM60-03**

- for vertical fitting of boxes combination SM60-06 or SM60-01 on distance 91mm

15056

**VEZNI ČLAN SM60-04**



- za horizontalno povezivanje kutija SM60-06 ili SM60-01 na razmak od 71mm
- s produžetkom na 91mm

**MULTI-COMBI CLIP SM60-04**

- for horizontal fitting of boxes combination SM60-06 or SM60-01 on distance 71mm
- with distance piece on 91mm

15108

**VS SM 68x40 PLITKA**



- promjer 60mm, dubina 40mm
- ugradni promjer 68mm
- IP30, 850°C, 400V~
- sukladno s DIN 49073 i VDE 0606
- montaža s nožicama

**VS SM 68x40 SHALLOW**

- diameter 60mm, depth 40mm
- cutting hole diameter 68mm
- IP30, 850°C, 400V~
- in accordance with DIN 49073 and VDE 0606
- mounting with claws

15109

**VS SM 68x55 GLOBOKA**



- promjer 60mm, dubina 55mm
- ugradni promjer 68mm
- IP30, 850°C, 400V~
- sukladno s DIN 49073 i VDE 0606
- montaža s nožicama

**VS SM 68x55 JUNCTION**

- diameter 60mm, depth 55mm
- cutting hole diameter 68mm
- IP30, 850°C, 400V~
- in accordance with DIN 49073 and VDE 0606
- mounting with claws

17729

**KUTIJA ZA BETON PLITKA**



- kutija za ugradnju u beton
- pomjer 60mm, dubina 49mm
- IP30, 650°C, 500V~
- sukladno s DIN 49073

**CONCRETE BOX SHALLOW**

- box for concrete wall fitting
- diameter 60mm, depth 49mm
- IP30, 650°C, 500V~
- in accordance with DIN 49073

17635

**KUTIJA ZA BETON DUBOKA**



- kutija za ugradnju u beton
- pomjer 60mm, dubina 77mm
- IP30, 650°C, 500V~
- sukladno s DIN 49073

**CONCRETE BOX JUNCTION**

- box for concrete wall fitting
- diameter 60mm, depth 77mm
- IP30, 650°C, 500V~
- in accordance with DIN 49073

17730

**NOSAČ – KUTIJA ZA BETON**



- omogućava učvršćivanje kutije za beton uz cijev u suprotnu stijenu

**COUNTER SUPPORT – CONCRETE BOX**

- for support of boxes with tube for extreme loads

17665

**UVODNICA 16 – KUTIJA ZA BETON**



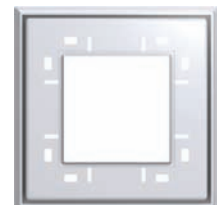
- čvrsto drži instalacijsku cijev, kod većih opterećenja

**PIPE STOPPER 16 – CONCRETE BOX**

- prevents pipes slipping out even under heavy load

24361

**IP44 ZAŠTITA ZA PRIKLJUČNICU S POKLOPCEM**



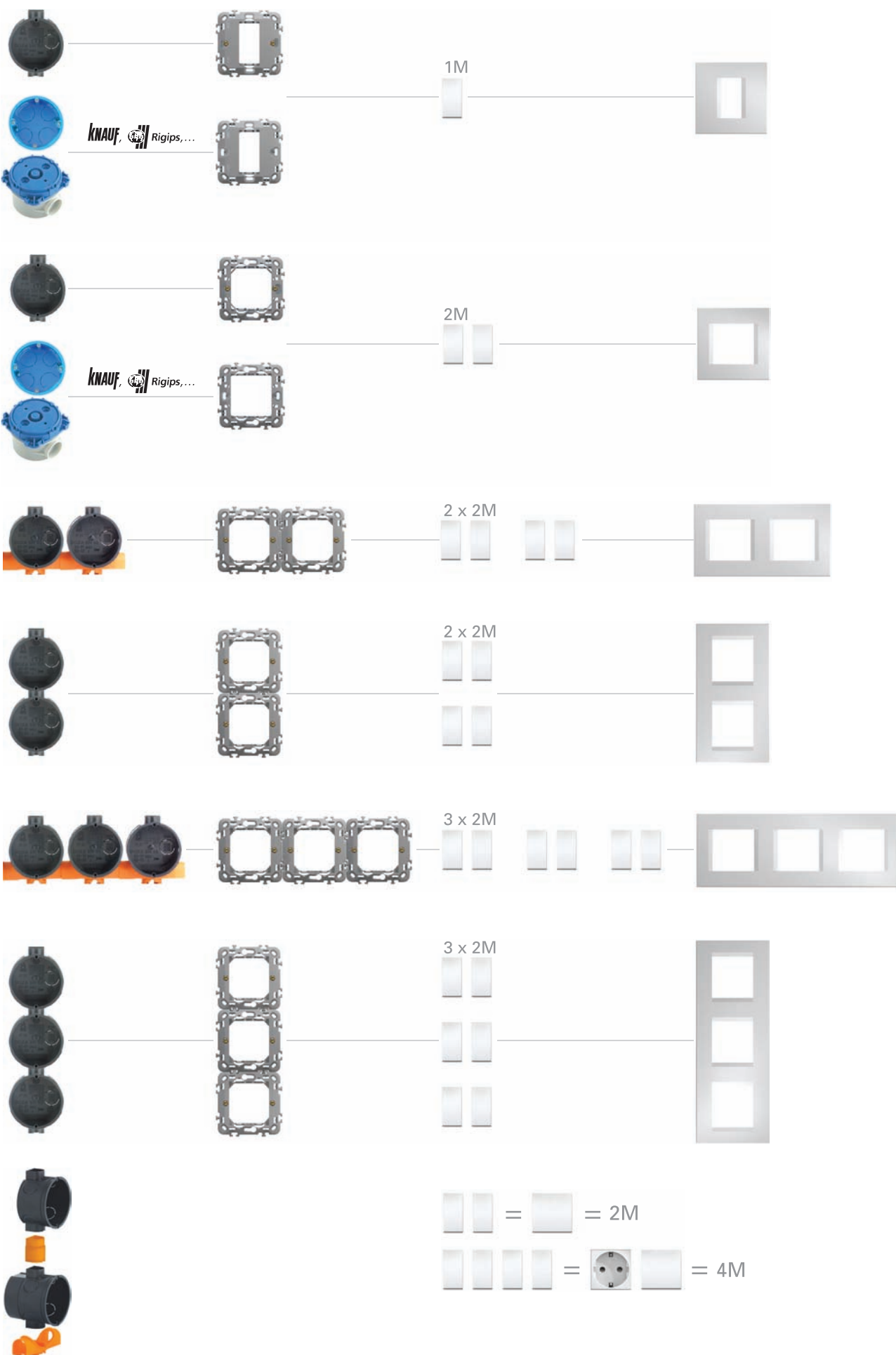
- brtva za nadogradnju MODUL 2M okvira
- IP44 zaštitu garantira samo uz priključnicu s poklopcem

**IP44 PROTECTION FOR SCHUKO COVERED SOCKET**

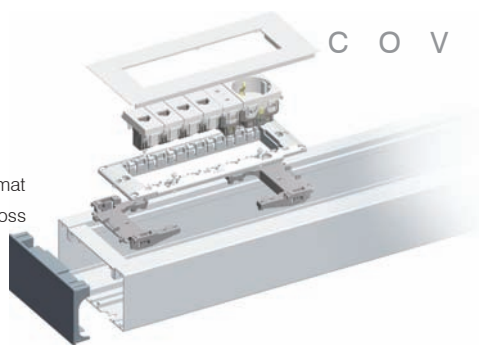
- washer for MODUL 2M surround
- IP44 protection can be achieved only in combination with covered socket



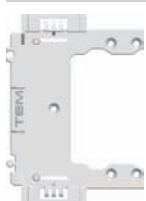
R O U N D   B O X E S   S Y S T E M



ES  SREBRNA – mat/SILVER – mat  
PW  BIJELA – sjajna/WHITE – gloss



### ADAPTER MA 92



24441

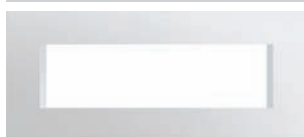
- adapter za montažu na rub MA kanala i MA stupića
- omogućuje montažu nosača 2/3M, 4M ili 7M Modul na kanal MA bez kutije
- za montažu jednoga nosača potrebna su dva adaptera

#### ADAPTER MA 92

- adapter for attaching the mounting frame to the edge of MA trunking or MA service posts
- used for fixing of mounting frame 2/3M, 4M and 7M on MA trunking without special box
- to fix one mounting frame two adapters are needed



### OKVIR 7M MA 92



24495  
 24442

- dekorativni okvir za sastavljanje kombinacije modula i nosača 4M
- odgovara montaži na zidni kanal MA i instalacijski stupić MA
- omogućuje prekrivanje neravnine MA poklopca kanala do 5mm

#### COVER PLATE MA 7M 92

- decorative cover plate for 7M combinations of modules
- goes together with 7M mounting frame
- used for MA cable trunkings or MA service posts
- enables coverage of MA front cover up to 5mm



### OKVIR 4M MA 92



24497  
 24443

- dekorativni okvir za sastavljanje kombinacije modula i nosača 4M
- odgovara montaži na zidni kanal MA i instalacijski stupić MA
- omogućuje prekrivanje neravnine MA poklopca kanala do 5mm

#### COVER PLATE MA 4M 92

- decorative cover plate for 4M combinations of modules
- goes together with 4M mounting frame
- used for MA cable trunkings or MA service posts
- enables coverage of MA front cover up to 5mm



### OKVIR 2/3M MA 92

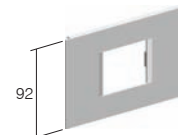


24499  
 24444

- dekorativni okvir za sastavljanje kombinacije modula i nosača 2/3M
- odgovara montaži na zidni kanal MA i instalacijski stupić MA
- omogućuje prekrivanje neravnine MA poklopca kanala do 5mm

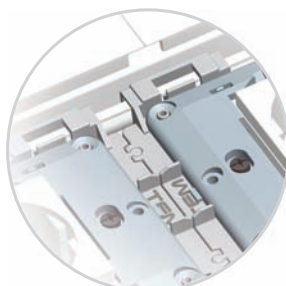
#### COVER PLATE MA 2/3M 92

- decorative cover plate for 2/3M combinations of modules
- goes together with 2/3M mounting frame
- used for MA cable trunkings or MA service posts
- enables coverage of MA front cover up to 5mm



Modul MA je modularni sistem za veličine: 2M, 4M i 7M

*Modul MA trunking is based on modular system making combinations of 2M, 4M or 7M elements*



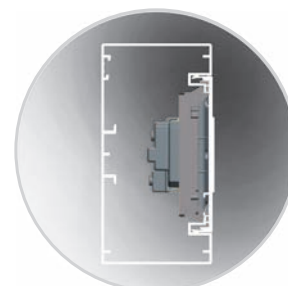
adapter MA omogućuje precizno pozicioniranje na rub kanala

*With Adapter MA exact positioning without extra effort is provided*



Modul sadrži elemente pripremljene za brzu montažu

*In Modul MA we provide special elements for quick installation*



Montaža bez kutija, više prostora za kablove, DIN šina oblika EN 60715

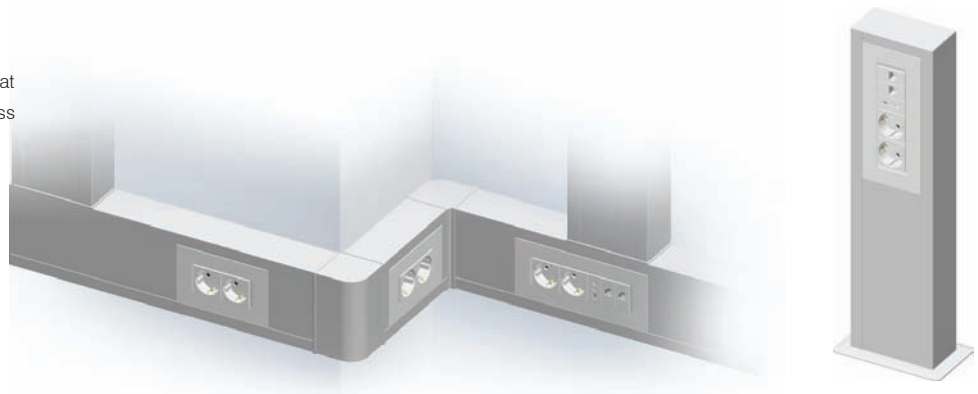
*Mounted without box means more space for cables, DIN-rail base shape EN-60715*

Presjek vodiča/ Cable dimension mm <sup>2</sup>	Korisni presjek kablova / Cable cross-section (mm <sup>2</sup> )				
	1 vodič/ 1 wire	2 vodiča/ 2 wires	3 vodiči/ 3 wires	4 vodiči/ 4 wires	5 vodičev/ 5 wires
1,5	44	111	121	144	169
2,5	49	133	157	169	211
4	58	169	183	211	256
6	68	196	225	256	307

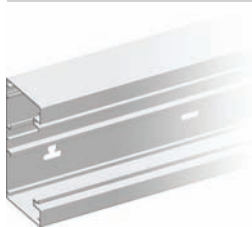
kanal/ Trunk	Kapacitet kanala / Trunk capacity	
	MA 135x65 prazan/ empty	MA 135x65 s Modul opremom/ with Modul switches and sockets
kapacitet/capacity	7600 mm <sup>2</sup>	5500 mm <sup>2</sup>
max ø	54 mm	2x42 mm

# INSTALACIJSKI KANALI ALUMA TRUNKING ALUMA

ES  SREBRNA – mat/SILVER – mat  
PW  BIJELA – sjajna/WHITE – gloss



## OSNOVA KANALA MA 130x65

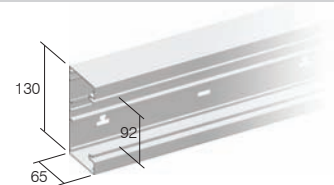


ES  28708  
PW  28709

- izrađena iz ekstrudiranog aluminija l=2m
- na dnu osnove je izrađen oblik DIN šine i utor za element za uzemljenje
- osnova ima pripremljene provrte za brzu montažu na zid

### TRUNKING BASE MA 130x65

- is made from extruded aluminium l=2m
- on the base of the trunk is a DIN - rail shape and earthing slot
- have predrilled holes for quick installation on the wall



## POKLOPAC KANALA MA 92

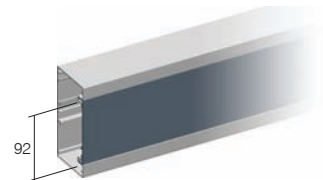


ES  28710  
PW  28711

- izrađen iz ekstrudiranog aluminija l=2m
- pokriva osnovu kanala i s tim štiti kablove
- ima izrađen utor za pričvršćivanje elementa za uzemljenje

### FRONT COVER MA 92

- is made from extruded aluminium l=2m
- covers the trunking base and therefore protects the cables
- has an earthing slot



## PREGRADA MA 43

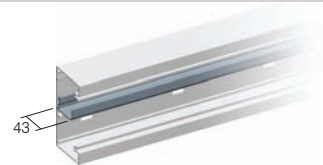


28712

- izrađen je iz ekstrudiranog polimera l=2m
- služi za odvajanje energetskih i komunikacijskih vodiča
- pričvrsti se na utor u osnovi kanala

### CABLE SHELF MA 43

- made from extruded polymer l=2m
- is used for separating electrical and network cables
- shelf is attached to the slot in the trunking base



## ZAVRŠNI ELEMENT MA 130x65



ES  28713  
PW  28714

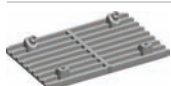
- izrađen je iz tehničkog polimera
- služi za zatvaranje kraja kanala

### STOP END MA 130x65

- made from technical polymer
- is used for closing the ends of the trunking base



## RAVNI VEZNI ELEMENT MA 65

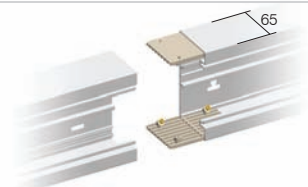


28727

- izrađen je iz tehničkog polimera
- služi za ravno povezivanje kanala
- za kvalitetno povezivanje su potrebna dva vezna elementa

### JOINTING PIECE MA 65

- made from technical polymer
- is used for straight attaching of two trunking bases
- for a quality connection two jointing pieces are needed



### UNIVERZALNI KUT MA 130x65

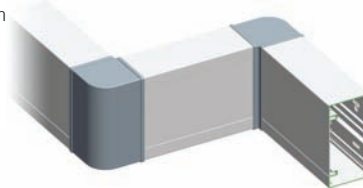


ES  28715  
PW  28716

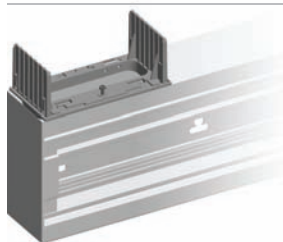
- izrađen je iz valjanog aluminija zajedno s veznim elementim
- služi za spajanje kanala u kutevima prostorija
- univerzalan je za vanjski i unutrašnji kut

#### UNIVERSAL CORNER MA 130x65

- made from cast aluminum together with jointing pieces
- used for attaching two trunking bases in the corner
- universal for internal or external corners



### L KOMAD MA 130x65

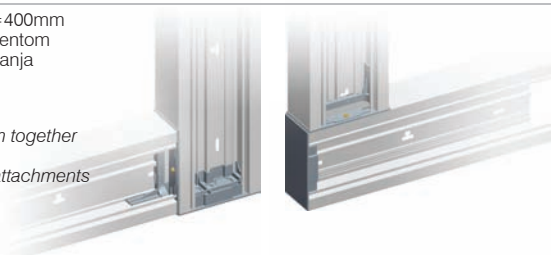


ES  28717  
PW  28718

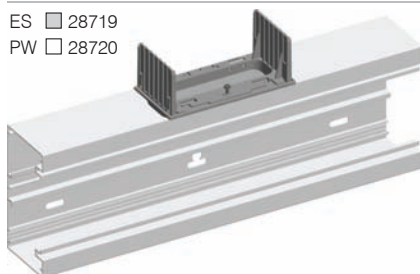
- izrađen je iz ekstrudirane osnove l=400mm zajedno s T veznim i završnim elementom
- univerzalan je za okomita L povezivanja kanala s lijeve i desne strane

#### L-BEND MA 130x65

- made from extruded base l=400mm together with T-joint piece and stop end
- universal for horizontal or vertical L attachments from left or right side



### T KOMAD MA 130x65

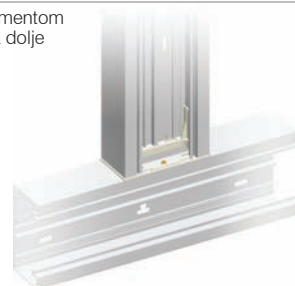


ES  28719  
PW  28720

- izrađen je iz ekstrudirane osnove l=400mm zajedno s T veznim elementom
- univerzalan je za okomita T povezivanja kanala prema gore i prema dolje

#### T-BEND MA 130x65

- made from extruded base l=400mm together with T-joint piece
- universal for vertical or horizontal T connection of trunking base upwards and downwards



### ELEMENT ZA UZEMLJENJE MA 2 x A6.3

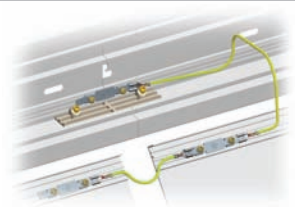


28728

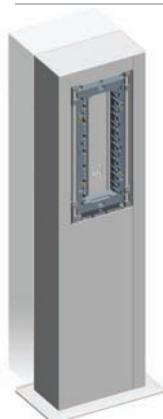
- služi za sigurno uzemljenje osnove i poklopca kanala
- za uzemljenje poklopca kanala potrebna su dva elementa za uzemljenje

#### EARTHING PIECE MA 2 x A6.3

- used for efficient earthing of trunking base and front cover
- for earthing front cover two earthing pieces are needed



### STUPIĆ MA 130x65x500



ES  28721  
PW  28722

- je pripremljen sustav za ugradnju elemenata ukupne veličine 7M (proizvoljne kombinacije)
- okvir 7M nije ugrađen
- služi za dovod elektrike kroz pod prostorije

#### SERVICE POST MA 130x65x500

- includes preassembled element for up to 7M combination of modules
- decorative cover 7M is not included
- used for supplying electricity from the floor or the ceiling

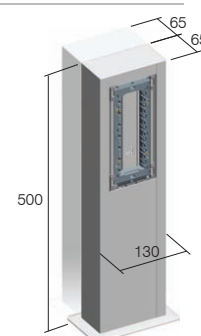
ES  28279  
PW  28280

### STUPIĆ DVOSTRUKI MA 2x 130x65x500

- je pripremljen sustav za ugradnju elemenata ukupne veličine 7M (proizvoljne kombinacije)
- okvir 7M nije ugrađen
- služi za dovod elektrike kroz pod prostorije

#### SERVICE POST DOUBLE MA 2x 130x65x500

- includes preassembled element for up to 7M combination of modules
- decorative cover 7M is not included
- used for supplying electricity from the floor or the ceiling



### NOSAČ STUPIĆA JEDNOSTRUKI MA 130x65



ES  28723  
PW  28724

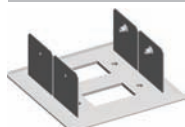
- služi za pričvršćivanje jednostrukog kanala na pod i/ili strop prostorije

#### FIXING PLATE SINGLE MA 130x65

- used for attaching single trunking base as service post on the floor and/or on the ceiling



### NOSAČ STUPIĆA DVOSTRUKI MA 2x 130x65

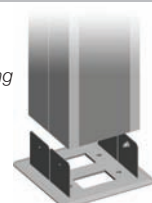


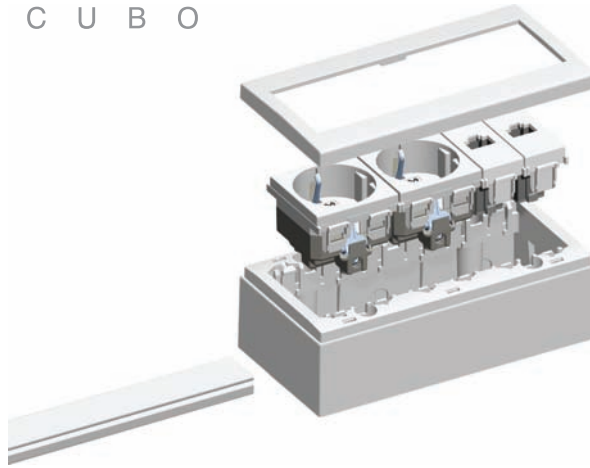
ES  28725  
PW  28726

- služi za pričvršćivanje dvostrukog kanala na pod i/ili strop prostorije

#### FIXING PLATE DOUBLE MA 2x 130x65

- used for attaching single trunking base as service post on the floor and/or on the ceiling





**KUČIŠTE MODUL CUBO 1M PW**



- 31579 - sastavljeno je od osnove i pokrova  
 - služi za nadžbukno pričvršćivanje Modul elemenata veličine 1M  
 - dovod vodiča je moguć sa zadnje strane ili s mini kanalom u vodoravnom ili okomitom smjeru

**SURFACE MOUNTING BOX MODUL CUBO 1M PW**

- composed from base and cover  
 - used for surface mounting of Modul elements in combinations up to 1M  
 - cable input is possible from the back side or with mini trunking in horizontal or vertical way



**KUČIŠTE MODUL CUBO 2M PW**



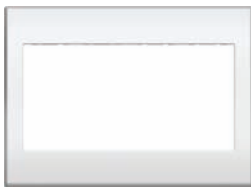
- 31580 - sastavljeno je od osnove i pokrova  
 - služi za nadžbukno pričvršćivanje Modul elemenata veličine 2M  
 - dovod vodiča je moguć sa zadnje strane ili s mini kanalom u vodoravnom ili okomitom smjeru

**SURFACE MOUNTING BOX MODUL CUBO 2M PW**

- composed from base and cover  
 - used for surface mounting of Modul elements in combinations up to 2M  
 - cable input is possible from the back side or with mini trunking in horizontal or vertical way



**KUČIŠTE MODUL CUBO 4M PW**



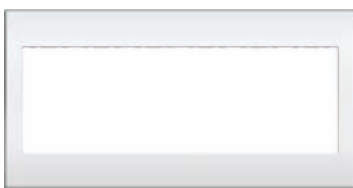
- 31581 - sastavljeno je od osnove i pokrova  
 - služi za nadžbukno pričvršćivanje Modul elemenata veličine 4M  
 - dovod vodiča je moguć sa zadnje strane ili s mini kanalom u vodoravnom ili okomitom smjeru

**SURFACE MOUNTING BOX MODUL CUBO 4M PW**

- composed from base and cover  
 - used for surface mounting of Modul elements in combinations up to 4M  
 - cable input is possible from the back side or with mini trunking in horizontal or vertical way



**KUČIŠTE MODUL CUBO 6M PW**



- 31582 - sastavljeno je od osnove i pokrova  
 - služi za nadžbukno pričvršćivanje Modul elemenata veličine 6M  
 - dovod vodiča je moguć sa zadnje strane ili s mini kanalom u vodoravnom ili okomitom smjeru

**SURFACE MOUNTING BOX MODUL CUBO 6M PW**

- composed from base and cover  
 - used for surface mounting of Modul elements in combinations up to 6M  
 - cable input is possible from the back side or with mini trunking in horizontal or vertical way



ekonomik<sup>®</sup>



**bitan je stil**

style is essential



što jednostavniji boravak  
simplified living



an attractive range  
privlačna linija



živopisni prostor  
colourful landscape



Planned for excellence  
Style is essential

ERGO

METAL

SOFT

Neutralan, kompaktan i elegantan dizajn prilagodljiv je svakom okruženju, u kojem boravite ili radite. Ne odstupa od interijera, već se u njega harmonično uklapa.

A neutral, compact, elegant design is adjustable to every working or living area. It does not stick out from the interior, but rather harmonically fits into it.





## Planirano za najbolje Bitan je stil



Čista linija nježno je zaobljena-promišljena ergonomija posebno za vas.

A pure line is slightly curved - well considered ergonomics especially for you.



Možete birati između sjajno refleksnih površina i suvremenog metalnog izgleda.

You can choose between shiny reflective surfaces and modern metallic look.



Mekoća oblika pronaći će svoje mjesto, kako u modernim tako i u klasičnim interijerima.

The softness of the form will find its place in modern as well as in classic interiors.

HARMONY

REFLEX

UV PROTECT

Želje su različite. Zbog toga smo za vas pažljivo odabrali mogućnosti, koje vam pružaju ispravan odgovor. Neutralna paleta boja dodatno će ispuniti vaš ambijent - neće vas ograničavati.

Desires can be very different. Therefore we have carefully selected possibilities for you, which can offer you the right answer. A neutral palette of colours will only complement your ambient - it will not restrict it.

## Press and the world will spring to life Colourful landscape between walls



Osjećaj refleksije pružiti će vam sjajni materijali iz polimera u bijeloj i biserno bijeloj (bež) boji.

Shiny polymer materials in white and beige colours enable reflective mood.



Moderan i neutralan je i odabrani dekorativni metalni sloj.

Selected decorative metallic coat is at the same time modern and neutral.

# Pritisnite i svijet će zaživjeti

## Živopisni prostor među zidovima



A sve vas, koji se želite poigrati sa pastelnim bojama, rješenje je Ekonomik Color.

For those who want to play with pastel colours Ekonomik Color represents a perfect solution.



Robusnost i visoka otpornost na vanjski utjecaj osigurana je duroplastičnim materijalom (linija Color).

Robustness and high resistance to external effects (UV) are secured by duroplastic materials (Color line).



## Za početak večeri Privlačna linija

Nudimo vam različite mogućnosti. Sami možete sastaviti kombinaciju, koja vam odgovara. Neka vam promjena boravišnog i radnog prostora postane užitek. Poigrajte se "vodoravno" ili "okomito". Sačuvajte prostor za važnije elemente interijera.

We offer you various possibilities. You can put together a combination which suits you. The changing of living or work space should be a special treat. Play "horizontally" or "vertically". Save some space for interior's more important elements.



Kod sastavljanja sačuvajte prostor na zidu. Ako raspoložete sa malo prostora, prava odluka je okomito.

With combining you save space on the wall. When faced with a limited space, "vertically" is the right decision.



Kombinirajte prema vlastitoj želji.

Combine as you please.

VERTIKAL

HORIZONTAL

SAVE SPACE

Start the evening  
An attractive range



Sastavljivi dijelovi olakšati će vam rad. Osigurani su vam pravilni razmaci.

Easy-fitting installation boxes will make your work easier. Proper lengths are guaranteed.





SIMPLE

FAST

FLEX



Dobro zamišljena konstrukcija sklopki omogućava također jednostavno dodatno osvjetljenje.

A well-planned switch construction makes easy illumination possible also subsequently.



Spajanje bez vijaka omogućava brzo i pouzdano priključenje vodiča. Na isti kontakt mogu se pričvrstiti dva vodiča različitih presjeka.

Plug-in contacts enable quick and reliable attachment of wires. Two wires of different diameters can be attached to the same contact.





Vidljivi elementi jednostavno se demontiraju. Biti će vam zahvalni i majstori.

Visible elements can be easily taken apart. Painters will be grateful to you.



Prolonge your day with a touch  
Simplified living

## Dodirom ćemo si produžiti dan Što jednostavniji boravak

Ekonomik je rješenje za sistem standardnih okruglih kutija. Pomoću njega možemo planirati kako jednostavne tako i zahtjevne instalacije, novogradnje i adaptacije. Sistem karakterizira spajanje bez uporabe vijaka, koji će vam uštedjeti vrijeme kod ugradnje elemenata.

Ekonomik is a solution for the system of standardised round installations boxes. It can be used for simple as well as more demanding installations, new buildings, and adaptations. The system is characterised by plug-in contacts which save time during installation of elements.

# Ugodan osjećaj u sigurnom utočištu Potpuno povjerenje u dobru konstrukciju



Pažljivim planiranjem osigurali smo zaštitu elemenata pod naponom od dodira. Osnovno pričvršćivanje mehanizama pomoću nožica ① moguće je naknadno učvrstiti vijcima ②. Takav način pričvršćivanja posebno je primjeren za sigurno i pouzdano pričvršćenje utičnice.

By careful planning elements under voltage have been protected against touching. Basic fixing of mechanisms with fixing claws ① allows additional strengthening with screws ②. This manner is especially appropriate for safe and reliable fixing of sockets.



Sklopke su testirane po međunarodnim standardima, koji jamče sigurnost i dugi vijek trajanja.

Switches were tested according to international standards which guarantee safety and long life span.



Za pouzdanost preklopa brinu se kontakti izrađeni od srebrne legure (AgNi).

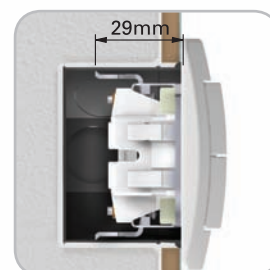
Contacts made of silver alloy (Ag-Ni) guarantee safe switching.

## Feeling well in a safe shelter Total confidence in a good construction

SAFE

THRUST

CERTIFIED



Nožice omogućavaju dublje pričvršćenje (i preko keramičkih pločica i sl.)

Fixing claws enable deeper fixing (also through ceramic tiles, etc.)



Sve sklopke na prednjoj strani nose vidljivu oznaku.

All switches have a clear identification in the front.

**1POL 16A**

- BE  15112 - 16A/250V~, tip SB31.01  
 - sukladno s EN-60669-1  
 BISBE  15121 - ugradnja u kutiju Ø60 s nožicama ili vijcima  
 - bezvijačno učvršćivanje vodiča presjeka 1.5-2.5mm<sup>2</sup>  
 silver  15288  
 color  15289

**1-WAY 16A**

- 16A/250V~, type SB31.01  
 - in accordance with EN-60669-1  
 - for mounting in round box Ø60 with claws or screws  
 - plug-in contacts 1.5-2.5mm<sup>2</sup>

**IZM 16A**

- BE  15113 - 16A/250V~, tip SB31.02  
 - sukladno s EN-60669-1  
 BISBE  15122 - ugradnja u kutiju Ø60 s nožicama ili vijcima  
 - bezvijačno učvršćivanje vodiča presjeka 1.5-2.5mm<sup>2</sup>  
 silver  15290  
 color  15291

**2-WAY 16A**

- 16A/250V~, type SB31.02  
 - in accordance with EN-60669-1  
 - for mounting in round box Ø60 with claws or screws  
 - plug-in contacts 1.5-2.5mm<sup>2</sup>

**KRIŽ 16A**

- BE  15115 - 16A/250V~, tip SB31.04  
 - sukladno s EN-60669-1  
 BISBE  15124 - ugradnja u kutiju Ø60 s nožicama ili vijcima  
 - bezvijačno učvršćivanje vodiča presjeka 1.5-2.5mm<sup>2</sup>  
 silver  15292  
 color  15293

**INTERMEDIATE 16A**

- 16A/250V~, type SB31.04  
 - in accordance with EN-60669-1  
 - for mounting in round box Ø60 with claws or screws  
 - plug-in contacts 1.5-2.5mm<sup>2</sup>

**2POL 16A**

- BE  15116 - 16A/250V~, tip SB31.05  
 - sukladno s EN-60669-1  
 BISBE  15125 - ugradnja u kutiju Ø60 s nožicama ili vijcima  
 - bezvijačno učvršćivanje vodiča presjeka 1.5-2.5mm<sup>2</sup>  
 silver  15294  
 color  15295

**2POLE 16A**

- 16A/250V~, type SB31.05  
 - in accordance with EN-60669-1  
 - for mounting in round box Ø60 with claws or screws  
 - plug-in contacts 1.5-2.5mm<sup>2</sup>

**1POL 16A INDIKATOR**

- BE  15280 - 16A/250V~, tip SB31.01, - sukladno s EN-60669-1  
 - ugradnja u kutiju Ø60 s nožicama ili vijcima  
 BISBE  15281 - bezvijačno učvršćivanje vodiča presjeka 1.5-2.5mm<sup>2</sup>  
 - ugrađena indikacija za noćno ili dnevno-kontrolno  
 silver  15296 - osvijetljenje s tinjalicom - tinjalica ugrađena  
 color  15297

**1-WAY 16A DIFFUSER**

- 16A/250V~, type SB31.01  
 - in accordance with EN-60669-1  
 - for mounting in round box Ø60 with claws or screws  
 - plug-in contacts 1.5-2.5mm<sup>2</sup>  
 - additional night or day-control illumination with  
 lamp possible, lamp is included

**SER 16A**

- BE  15114 - 16A/250V~, tip SB31.03  
 - sukladno s EN-60669-1  
 BISBE  15123 - ugradnja u kutiju Ø60 s nožicama ili vijcima  
 - bezvijačno učvršćivanje vodiča presjeka 1.5-2.5mm<sup>2</sup>  
 silver  15300  
 color  15301

**2GANG -1WAY 16A**

- 16A/250V~, type SB31.03  
 - in accordance with EN-60669-1  
 - for mounting in round box Ø60 with claws or screws  
 - plug-in contacts 1.5-2.5mm<sup>2</sup>

**DVOSTRUKA IZM 16A**

- BE  15117 - 16A/250V~, tip SB31.06  
 - sukladno s EN-60669-1  
 BISBE  15126 - ugradnja u kutiju Ø60 s nožicama ili vijcima  
 - bezvijačno učvršćivanje vodiča presjeka 1.5-2.5mm<sup>2</sup>  
 silver  15302  
 color  15303

**2GANG - 2WAY 16A**

- 16A/250V~, type SB31.06  
 - in accordance with EN-60669-1  
 - for mounting in round box Ø60 with claws or screws  
 - plug-in contacts 1.5-2.5mm<sup>2</sup>



**TIPKALO 16A**

- BE  15154  
 BISBE  15155  
 silver  15298  
 color  15299

- 16A/250V~, tip SB31.20

- sukladno s EN-60669-1

- ugradnja u kutiju Ø60 s nožicama ili vijcima

- bezvijačno učvršćivanje vodiča presjeka 1.5-2.5mm<sup>2</sup>**PUSH BUTTON 16A**

- 16A/250V~, type SB31.20

- in accordance with EN-60669-1

- for mounting in round box Ø60 with claws or screws

- plug-in contacts 1.5-2.5mm<sup>2</sup>**TIPKALO SVJETLO 16A**

- BE  15118  
 BISBE  15127  
 silver  15304  
 color  15305

- 16A/250V~, tip SB31.20

- sukladno s EN-60669-1

- ugradnja u kutiju Ø60 s nožicama ili vijcima

- bezvijačno učvršćivanje vodiča presjeka 1.5-2.5mm<sup>2</sup>

- ugrađena indikacija za noćno ili dnevno-kontrolno osvjjetljenje s tinjalicom - tinjalica ugrađena

**PUSH BUTTON LAMP 16A**

- 16A/250V~, type SB31.20

- in accordance with EN-60669-1

- for mounting in round box Ø60 with claws or screws

- plug-in contacts 1.5-2.5mm<sup>2</sup>

- additional night or day-control illumination with lamp possible, lamp is included

**TIPKALO ZVONO 16A**

- BE  15119  
 BISBE  15128  
 silver  15306  
 color  15307

- 16A/250V~, tip SB31.20

- sukladno s EN-60669-1

- ugradnja u kutiju Ø60 s nožicama ili vijcima

- bezvijačno učvršćivanje vodiča presjeka 1.5-2.5mm<sup>2</sup>

- ugrađena indikacija za noćno ili dnevno-kontrolno osvjjetljenje s tinjalicom - tinjalica ugrađena

**PUSH BUTTON BELL 16A**

- 16A/250V~, type SB31.20

- in accordance with EN-60669-1

- for mounting in round box Ø60 with claws or screws

- plug-in contacts 1.5-2.5mm<sup>2</sup>

- additional night or day-control illumination with lamp possible, lamp is included

**TIPKALO S NATPISNOM PLOČICOM 16A**

- BE  15459  
 BISBE  15458  
 silver  15460  
 color  15461

- 16A/250V~, tip SB31.20, - sukladno s EN-60669-1

- ugradnja u kutiju Ø60 s nožicama ili vijcima

- bezvijačno učvršćivanje vodiča presjeka 1.5-2.5mm<sup>2</sup>

- ugrađena natpisna pločica za noćno ili dnevno-kontrolno osvjjetljenje tinjalica je ugrađena

**PUSH BUTTON INSCRIPTION PLATE 16A**

- 16A/250V~, type SB31.21, - in accordance with EN-60669-1

- for mounting in round box Ø60 with claws or screws

- plug-in contacts 1.5-2.5mm<sup>2</sup>

- additional night illumination with lamp possible, lamp is included

**TIPKALO DVOSTRUKO 16A**

- BE  15120  
 BISBE  15129  
 silver  15466  
 color  15467

- 16A/250V~, tip SB31.21

- sukladno s EN-60669-1

- ugradnja u kutiju Ø60 s nožicama ili vijcima

- bezvijačno učvršćivanje vodiča presjeka 1.5-2.5mm<sup>2</sup>**PUSH BUTTON DOUBLE 16A**

- 16A/250V~, type SB31.21

- in accordance with EN-60669-1

- for mounting in round box Ø60 with claws or screws

- plug-in contacts 1.5-2.5mm<sup>2</sup>**TIPKALO ROLETE 16A**

- BE  15314  
 BISBE  15315  
 silver  15359  
 color  15360

- 16A/250V~, tip SB31.24

- sukladno s EN-60669-1

- ugradnja u kutiju Ø60 s nožicama ili vijcima

- s mehaničkom blokadom (međukontakt)

- bezvijačno učvršćivanje vodiča presjeka 1.5-2.5mm<sup>2</sup>**PUSH BUTTON SHUTTERS 16A**

- 16A/250V~, type SB31.24

- in accordance with EN-60669-1

- for mounting in round box Ø60 with claws or screws

- with mechanical interblock

- plug-in contacts 1.5-2.5mm<sup>2</sup>

400//433/4, 400W



- BE  15146 - rotacijski
- BISBE  15147 - raspon: min: 60W, max: 400W
- silver  15361 - opterećenja: ohmska - žarulje sa žarnom niti 250V~
- color  15362 - veza sa izmjeničnom sklopkom **nije moguća**
- veza dva regulatora svjetla **nije dopuštena**
- ugradnja u kutiju Ø60 s nožicama ili vijcima
- vijčano pričvršćivanje vodiča presjeka 1.5-2.5mm<sup>2</sup>



400//433/4, 400W

- rotation control
- load: min: 60W, max: 400W
- load type: ohmic - classic lamps 250V~
- 2-way switch combination is **not possible**
- two dimmers combination is **not allowed**
- for mounting in round box Ø60 with claws or screws
- screw contacts 1.5-2.5mm<sup>2</sup>

410//434, 400W



- BE  15160 - rotacijski sa sklopkom
- BISBE  15161 - raspon: min: 60W, max: 400W
- silver  15308 - opterećenja: ohmska - žarulje sa žarnom niti 250V~
- color  15309 - moguća veza sa izmjeničnom sklopkom
- veza dva regulatora svjetla **nije dopuštena**
- ugradnja u kutiju Ø60 s nožicama ili vijcima
- vijčano pričvršćivanje vodiča presjeka 1.5-2.5mm<sup>2</sup>



410//434, 400W

- rotation control with switch
- load: min: 60W, max: 400W
- load type: ohmic - classic lamps 250V~
- 2-way switch combination is possible
- two dimmers combination is **not allowed**
- for mounting in round box Ø60 with claws or screws
- screw contacts 1.5-2.5mm<sup>2</sup>

960//435 HAN, 500VA



- BE  15282 - rotacijski sa sklopkom
- BISBE  15283 - raspon: min: 25VA, max: 500VA
- silver  15462 - opterećenja: induktivna - halogene žarulje 12V~
- color  15463 - s običnim transformatorom
- moguća veza sa izmjeničnom sklopkom
- veza dva regulatora svjetla **nije dopuštena**
- ugradnja u kutiju Ø60 s nožicama ili vijcima
- vijčano pričvršćivanje vodiča presjeka 1.5-2.5mm<sup>2</sup>



960//435 HAN, 500VA

- rotation control with switch
- load: min: 25VA, max: 500VA
- load type: inductive - halogen lamps 12V~ with classic transformer
- 2-way switch combination is possible
- two dimmers combination is **not allowed**
- for mounting in round box Ø60 with claws or screws
- screw contacts 1.5-2.5mm<sup>2</sup>

ELTD//300-433 HAB, 315W



- BE  15284 - rotacijski sa sklopkom
- BISBE  15285 - raspon: min: 15W, max: 315W
- silver  15363 - opterećenja: induktivna - halogene žarulje 12V~
- color  15364 - s elektroničkim IGBT transformatorom
- moguća veza sa izmjeničnom sklopkom
- veza dva regulatora svjetla **nije dopuštena**
- ugradnja u kutiju Ø60 s nožicama ili vijcima
- vijčano pričvršćivanje vodiča presjeka 1.5-2.5mm<sup>2</sup>



ELTD//300-433 HAB, 315W

- rotation control with switch
- load: min: 15W, max: 315W
- load type: inductive - halogen lamps 12V~ with electronic IGBT transformer
- 2-way switch combination is possible
- two dimmers combination is **not allowed**
- for mounting in round box Ø60 with claws or screws
- screw contacts 1.5-2.5mm<sup>2</sup>

FAN//456, 600VA



- BE  15286 - rotacijski sa sklopkom
- BISBE  15287 - raspon: min: 25VA, max: 600VA
- silver  15464 - opterećenja: ventilatorski motori 250V~
- color  15465 - moguća veza sa izmjeničnom sklopkom
- veza dva regulatora svjetla **nije dopuštena**
- ugradnja u kutiju Ø60 s nožicama ili vijcima
- vijčano pričvršćivanje vodiča presjeka 1.5-2.5mm<sup>2</sup>



FAN//456, 600VA

- rotation control with switch
- load: min: 25VA, max: 600VA
- load type: AC motors-fans 250V~
- 2-way switch combination is possible
- two dimmers combination is **not allowed**
- for mounting in round box Ø60 with claws or screws
- screw contacts 1.5-2.5mm<sup>2</sup>

## ŠUKO 16A



- BE  17464 - priključnica šuko sa zaštitnim kontaktom  
 BISBE  17469 - 16A/250V~, tip VT01  
 silver  17711 - sukladno s EN-60884-1, CEE7  
 color  17712 - ugradnja u kutiju Ø60 s nožicama ili vijcima  
 - vijčano pričvršćivanje vodiča presjeka 1.5-2.5mm<sup>2</sup>

## SCHUKO 16A

- schuko socket 2P+E  
 - 16A/250V~, type VT01  
 - in accordance with EN-60884-1, CEE7  
 - for mounting in round box Ø60 with claws or screws  
 - screw contacts 1.5-2.5mm<sup>2</sup>



## ŠUKO 16A BEZVIJČANA



- BE  17501 - priključnica šuko sa zaštitnim kontaktom  
 BISBE  17500 - 16A/250V~, tip BV01  
 silver  17713 - sukladno s EN-60884-1, CEE7  
 color  17714 - ugradnja u kutiju Ø60 s nožicama ili vijcima  
 - bezvijčano učvršćivanje vodiča presjeka 1.5-2.5mm<sup>2</sup>

## SCHUKO 16A PLUG-IN

- schuko socket 2P+E  
 - 16A/250V~, type BV01  
 - in accordance with EN-60884-1, CEE7  
 - for mounting in round box Ø60 with claws or screws  
 - plug-in contacts 1.5-2.5mm<sup>2</sup>



## ŠUKO 16A SA ZAŠTITOM



- BE  17808 - priključnica šuko sa zaštitnim kontaktom  
 BISBE  17809 - 16A/250V~, tip VT01  
 silver  17810 - sukladno s EN-60884-1, CEE7  
 color  17811 - ugradnja u kutiju Ø60 s nožicama ili vijcima  
 - vijčano pričvršćivanje vodiča presjeka 1.5-2.5mm<sup>2</sup>

## SCHUKO 16A SHUTTERED

- schuko socket 2P+E  
 - 16A/250V~, type VT01  
 - in accordance with EN-60884-1, CEE7  
 - for mounting in round box Ø60 with claws or screws  
 - screw contacts 1.5-2.5mm<sup>2</sup>



## 2P+E 16A F BEZVIJČANA



- BE  17793 - priključnica sa zaštitnim pinom – francuski standard  
 BISBE  17794 - 16A/250V~, tip BV01.1  
 silver  17795 - sukladno s EN-60884-1, CEE7  
 color  17796 - ugradnja u kutiju Ø60 s nožicama ili vijcima  
 - bezvijčano učvršćivanje vodiča presjeka 1.5-2.5mm<sup>2</sup>

## 2P+E 16A F PLUG-IN

- socket 2P+E, with earth pin - French standard  
 - 16A/250V~, type BV01.1  
 - in accordance with EN-60884-1, CEE7  
 - for mounting in round box Ø60 with claws or screws  
 - plug-in contacts 1.5-2.5mm<sup>2</sup>



## ŠUKO 16A S POKLOPCEM



- BE  17627 - priključnica šuko sa zaštitnim kontaktom s poklopcem  
 BISBE  17628 - 16A/250V~, tip VT01  
 silver  17717 - sukladno s EN-60884-1, CEE7  
 color  17718 - ugradnja u kutiju Ø60 s nožicama ili vijcima  
 - vijčano pričvršćivanje vodiča presjeka 1.5-2.5mm<sup>2</sup>

## SCHUKO 16A COVERED

- schuko socket 2P+E with cover  
 - 16A/250V~, type VT01  
 - in accordance with EN-60884-1, CEE7  
 - for mounting in round box Ø60 with claws or screws  
 - screw contacts 1.5-2.5mm<sup>2</sup>



## ŠUKO 16A ULOŽAK



- BE  17475 - priključnica šuko sa zaštitnim kontaktom bez dekorativnog okvira  
 BISBE  17477 - 16A/250V~, tip VT01, - sukladno s EN-60884-1, CEE7  
 silver  17715 - ugradnja u kutiju Ø60 s nožicama ili vijcima  
 color  17716 - vijčano pričvršćivanje vodiča presjeka 1.5-2.5mm<sup>2</sup>  
 - za kombinaciju s dvostrukim ili trostrukim okvirima

## SCHUKO 16A BOK

- schuko socket 2P+E without decorative surround  
 - 16A/250V~, type VT01, - in accordance with EN-60884-1, CEE7  
 - for mounting in round box Ø60 with claws or screws  
 - screw contacts 1.5-2.5mm<sup>2</sup>  
 - for combination with 2-gang or 3-gang surrounds



## ŠUKO 16A ULOŽAK



- RD  17544 - priključnica šuko sa zaštitnim kontaktom bez dekorativnog okvira  
 ZE  17543 - 16A/250V~, tip VT01, - sukladno s EN-60884-1, CEE7  
 OR  17702 - ugradnja u kutiju Ø60 s nožicama ili vijcima  
 - vijčano pričvršćivanje vodiča presjeka 1.5-2.5mm<sup>2</sup>  
 - za kombinaciju s dvostrukim ili trostrukim okvirima

## SCHUKO 16A BOK

- schuko socket 2P+E without decorative surround  
 - 16A/250V~, type VT01, - in accordance with EN-60884-1, CEE7  
 - for mounting in round box Ø60 with claws or screws  
 - screw contacts 1.5-2.5mm<sup>2</sup>  
 - for special purpose



**ŠUKO 16A DVOSTRUKA**



- BE  17666 - dvostruka priključnica šuko sa zaštitnim kontaktom  
 - 16A/250V~, tip BV20  
 BISBE  17667 - sukladno s EN-60884-1, CEE7  
 silver  17778 - ugradnja u kutiju Ø60 s nožicama ili vijcima  
 - bezvijačno učvršćivanje vodiča presjeka 1.5-2.5mm<sup>2</sup>

**SCHUKO 16A DOUBLE**

- schuko socket 2P+E double  
 - 16A/250V~, type BV20  
 - in accordance with EN-60884-1, CEE7  
 - for mounting in round box Ø60 with claws or screws  
 - screwless contacts 1.5-2.5mm<sup>2</sup>



**2P+E 16A F DVOSTRUKA**



- BE  17801 - dvostruka priključnica sa zaštitnim pinom – francuski standard  
 - 16A/250V~, tip BV20  
 BISBE  17802 - sukladno s EN-60884-1, CEE7  
 silver  17803 - ugradnja u kutiju Ø60 s nožicama ili vijcima  
 - bezvijačno učvršćivanje vodiča presjeka 1.5-2.5mm<sup>2</sup>

**2P+E 16A F DOUBLE**

- socket 2P+E double, with earth pin - French standard  
 - 16A/250V~, type BV20.1  
 - in accordance with EN-60884-1, CEE7  
 - for mounting in round box Ø60 with claws or screws  
 - screwless contacts 1.5-2.5mm<sup>2</sup>



**TEL 2x6/2 RJ11**



- BE  17467 - 2x6/2 RJ11  
 BISBE  17472 - ugradnja u kutiju Ø60 s nožicama ili vijcima

**TEL 2x6/2 RJ11**

- color  17735 - 2x6/2 RJ11  
 - for mounting in round box Ø60 with claws or screws



**TEL 1x6/6 CAT3 KEYSTONE**



- BE  17703 - 1xRJ11 6/6 CAT3 KEYSTONE  
 BISBE  17704 - ugradnja u kutiju Ø60 s nožicama ili vijcima

**TEL 1x6/6 CAT3 KEYSTONE**

- silver  17725 - 1xRJ11 6/6 CAT3 KEYSTONE  
 color  17726 - for mounting in round box Ø60 with claws or screws



**UNIV. KOM 1x8/8 CAT5e KEYSTONE**



- BE  17707 - CAT5e KEYSTONE  
 BISBE  17708 - 2xRJ45 8/8  
 silver  17727 - sukladno sa IEC-60603-7  
 color  17728 - ugradnja u kutiju Ø60 s nožicama ili vijcima  
 - upotreba: telefonske i računalne komunikacije

**UNIV. KOM 1x8/8 CAT5e KEYSTONE**

- CAT5e KEYSTONE  
 - 1xRJ45 8/8  
 - in accordance with IEC-60603-7  
 - for mounting in round box Ø60 with claws or screws



**UNIV. KOM 2x8/8 CAT5e KEYSTONE**



- BE  17709 - CAT5e KEYSTONE  
 BISBE  17710 - 2xRJ45 8/8  
 silver  17868 - sukladno sa IEC-60603-7  
 color  17869 - ugradnja u kutiju Ø60 s nožicama ili vijcima  
 - upotreba: telefonske i računalne komunikacije

**UNIV. KOM 2x8/8 CAT5e KEYSTONE**

- CAT5e KEYSTONE  
 - 2xRJ45 8/8  
 - in accordance with IEC-60603-7  
 - for mounting in round box Ø60 with claws or screws  
 - use: telephone and computer systems



**TVR SAMOSTALNA**

- BE  17779 - samostalna TVR priključnica – IEC standard  
 - bez prigušenja  
 BISBE  17780 - ugradnja u kutiju Ø60 s nožicama ili vijcima  
 - konektor straga - F konektor  
 silver  17781  
 color  17782

**TVR END-LINE**

- end line TV-RD socket - IEC standard  
 - no reduction  
 - for mounting in round box Ø60 with claws or screws  
 - back connector - F standard

**TVR ZAVRŠNA**

- BE  17465 - završna priključnica u seriji ili samostalna, tip VT41  
 - prigušenje: R-7.5dB, TV-2dB  
 BISBE  17470 - ugradnja u kutiju Ø60 s nožicama ili vijcima  
 silver  17719 - vijčano pričvršćivanje vodiča  
 color  17720

**TVR END-LINE**

- end or single socket  
 - reduction: R-7.5dB, TV-2dB  
 - for mounting in round box Ø60 with claws or screws  
 - screw contacts

**TVR PROLAZNA**

- BE  17466 - prolazna priključnica u seriji, tip VT41  
 - prigušenje: R-12.5dB, TV-8.5dB, prolaz-2dB  
 BISBE  17471 - ugradnja u kutiju Ø60 s nožicama ili vijcima  
 silver  17721 - vijčano pričvršćivanje vodiča  
 color  17722

**TVR ON-LINE**

- trough pass socket  
 - reduction: R-12.5dB, TV-8.5dB, trough-2dB  
 - for mounting in round box Ø60 with claws or screws  
 - screw contacts

**SAT-TV-R 3P**

- BE  17549 - završna priključnica SAT-TV-R  
 - prigušenje: R-1dB, TV-15dB, SAT-3dB  
 BISBE  17550 - ugradnja u kutiju Ø60 s nožicama ili vijcima  
 silver  17723 - vijčano pričvršćivanje vodiča  
 color  17724

**SAT-TV-R 3P**

- end or single socket  
 - reduction: R-1dB, TV-15dB, SAT-3dB  
 - for mounting in round box Ø60 with claws or screws  
 - screw contacts

**AVDIO**

- BE  17783 - audio RCA priključnica – 2xRCA  
 - ugradnja u kutiju Ø60 s nožicama ili vijcima  
 BISBE  17784 - pričvršćivanje vodiča lemljenjem  
 silver  17785  
 color  17786

**AUDIO**

- audio RCA vtičnica - 2xRCA  
 - for mounting in round box Ø60 with claws or screws  
 - soldering connection of cable



**ZVONO 9V**

BE  17575  
BISBE  17576

- elektronsko zvono
- napon: 9V baterija
- tri ulaza za tri različita načina zvonjenja
- ugradnja u kutiju Ø60 s nožicama ili vijcima

**BELL 9V**

- electronic bell
- supply 9V block battery
- three inputs - for three different sound options
- for mounting in round box Ø60 with claws or screws

**SLIJEPI ELEMENT**

BE  15370  
BISBE  15371  
silver  15372  
color  15373

- ugradnja u kutiju Ø60 s nožicama ili vijcima

**BLANK**

- for mounting in round box Ø60 with claws or screws

**SOS SIGNALIZACIJA KLINIKOM**

- sistem SOS signalizacije u bolnicama, domovima umirovljenika, hotelima,...
- više informacija na [www.promon.si](http://www.promon.si)
- ugradnja u kutiju Ø60 s nožicama ili vijcima
- sukladno s EN-55022

**SOS SIGNALIZATION - KLINICOM**

- SOS signalization system for hospitals, home for aged, hotels,...
- for mounting in round box Ø60 with claws or screws
- more informations at [www.promon.si](http://www.promon.si)
- in accordance with EN-55022

**KOMUNIKACIJSKI NOSAČ KOSI KEYSTONE 1x**

BE  17731  
BISBE  17733  
silver  17737

- nosač za komunikacijske module KEYSTONE
- ugradnja u kutiju Ø60 s nožicama ili vijcima
- bez dekorativnog okvira
- komunikacijski modul nije ugrađen, pogledaj stranu 27

**COMMUNICATION CARRIER SLOPED KEYSTONE 1x**

- carrier for communication modules KEYSTONE
- for mounting in round box Ø60 with claws or screws
- without decorative surround
- without communication module, see page 27

**KOMUNIKACIJSKI NOSAČ KOSI KEYSTONE 2x**

BE  17732  
BISBE  17734  
silver  17738

- nosač za komunikacijske module KEYSTONE
- ugradnja u kutiju Ø60 s nožicama ili vijcima
- bez dekorativnog okvira
- komunikacijski modul nije ugrađen, pogledaj stranu 27

**COMMUNICATION CARRIER SLOPED KEYSTONE 2x**

- carrier for communication modules KEYSTONE
- for mounting in round box Ø60 with claws or screws
- without decorative surround
- without communication module, see page 27

**KOMUNIKACIJSKI NOSAČ RAVNI MINI-COM KR**

BE  31222  
BISBE  31223  
silver  31591

- nosač za komunikacijske module MINI-COM
- ugradnja u kutiju Ø60 s nožicama ili vijcima
- bez dekorativnog okvira
- komunikacijski modul nije ugrađen, pogledaj stranu 28

**COMMUNICATION CARRIER MINI-COM KR**

- carrier for communication modules Mini-COM
- for mounting in round box Ø60 with claws or screws
- without decorative surround
- without communication module, see page 28

**KOMUNIKACIJSKI NOSAČ KOSI MINI-COM**

BE  31193  
BISBE  31194  
silver  31592

- nosač za komunikacijske module MINI-COM
- ugradnja u kutiju Ø60 s vijcima
- bez dekorativnog okvira
- komunikacijski modul nije ugrađen, pogledaj stranu 28

**COMMUNICATION CARRIER SLOPED MINI-COM 2x**

- carrier for communication modules Mini-COM
- for mounting in round box Ø60 with screws
- without decorative surround
- without communication module, see page 28





31053

**TINJALICA - SKLOPKA SB31**

- tinjalica za ugradnju u sklopku ili tipkalo
- omogućava noćno ili dnevno-kontrolno osvijetljenje sklopke ili tipkala

**LAMP – SWITCH SB31**

- lamp for build in to switch or push button
- providing night or day-control illumination of switch or push button



BE  17488  
BISBE  17530

**PETEROPOLNI STALNI PRIKLJUČAK 5x4mm<sup>2</sup>**

- 3P+N+E
- 16A/380V~
- ugradnja u kutiju Ø60 s nožicama ili vijcima
- vijčano pričvršćivanje vodiča presjeka 1.5-4mm<sup>2</sup>

**5POLE CONNECTION BOX 5x4mm<sup>2</sup>**

- 3P+N+E
- 16A/380V~
- for mounting in round box Ø60 with claws or screws
- screw contacts 1.5-4mm<sup>2</sup>



BE  17523  
BISBE  17522

**PRIKLJUČNICA 5POL 3P+N+E**

- 3P+N+E priključnica, 16A/380V~
- JUS standard, nije za uporabu u EU
- sukladno s EN-60884-1, CEE7
- ugradnja u priloženu kutiju s vijcima
- vijčano pričvršćivanje vodiča presjeka 1.5-4mm<sup>2</sup>

**SOCKET 5POLE 3P+N+E**

- socket 3P+N+E, 16A/380V~
- JUS standard, not for use in EU
- in accordance EN-60884-1, CEE7
- for mounting in enclosed box with screws
- screw contacts 1.5-4mm<sup>2</sup>



BE  17517  
transparent  17518

**ZIDNI ŠTITNIK**

- štiti površinu oko priključnice ili sklopke
- WALL PROTECTION**
- protect surface around socket or switch



BE  17507  
BISBE  17514

**ŠTITNIK ZA PRIKLJUČNICU 1198 5**

- onemogućava dostup do kontakata priključnice
- INSERT FOR SCHUKO SOCKET 1198 5**
- protect against any touch of socket contact



BE  24159  
BISBE  24158

**NADŽBUKNO POSTOLJE 1**

- omogućava nadžbuknu montažu sklopki i priključnic
- veličina 80x80mm, - dubina 38mm
- pričvršćivanje s vijcima

**SURFACE MOUNTED BOX 1**

- for surface mounting of in-wall switches and sockets
- size 80x80mm, - depth 38mm
- screw fixing



BE  24120  
 BISBE  24121  
 silver  24399  
 color  31401

**OKVIR 1**

- dekorativni pojedinačni okvir

**SURROUND 1**

- decorative surround 1-gang for combination of switch or socket



BE  24157  
 BISBE  24156  
 silver  24401  
 color  31402

**OKVIR 2 HORIZ**

- dekorativni dvostruki okvir za horizontalnu kombinaciju dvije sklopke ili priključnice

**SURROUND 2 HORIZ**

- decorative surround 2-gang for horizontal combination of two switches or sockets



BE  24155  
 BISBE  24154  
 silver  24403  
 color  31403

**OKVIR 2 VERT**

- dekorativni dvostruki okvir za vertikalnu kombinaciju dvije sklopke ili priključnice

**SURROUND 2 VERT**

- decorative surround 2-gang for vertical combination of two switches or sockets



BE  24151  
 BISBE  24150  
 silver  24405  
 color  31404

**OKVIR 3 HORIZ**

- dekorativni trostruki okvir za horizontalnu kombinaciju tri sklopke ili priključnice

**SURROUND 3 HORIZ**

- decorative surround 3-gang for horizontal combination of three switches or sockets



BE  24153  
 BISBE  24152  
 silver  24407  
 color  31405

**OKVIR 3 VERT**

- dekorativni trostruki okvir za vertikalnu kombinaciju tri sklopke ili priključnice

**SURROUND 3 VERT**

- decorative surround 3-gang for vertical combination of three switches or sockets



BE  24445  
 BISBE  24462  
 silver  24464

**OKVIR 4 HORIZ**

- dekorativni četverostruki okvir za horizontalnu kombinaciju četiri sklopke ili priključnice

**SURROUND 4 HORIZ**

- decorative surround 4-gang for horizontal combination of four switches or sockets



BE  24446  
 BISBE  24463  
 silver  24465

**OKVIR 4 VERT**

- dekorativni četverostruki okvir za vertikalnu kombinaciju četiri sklopke ili priključnice

**SURROUND 4 VERT**

- decorative surround 4-gang for vertical combination of four switches or sockets

## DEKORATIVNI UMETCI / DECORATIVE FRAMES



- 24093 ZELENA / GREEN
- 24092 PLAVA / BLUE
- 24091 LJUBIČASTA / VIOLET
- 24090 ROZA / PINK
- 24089 CRVENA / RED
- 24088 ŽUTA / YELLOW
- 24094 BIJELA / WHITE
- 24095 SIVA / GREY
- 24096 CRNA / BLACK
- 24097 SMEĐA / BROWN



- 24100 MET. PLAVA / MET. BLUE
- 24099 BRONČANA / BRONZE
- 24098 SREBRNA / SILVER
- 24042 ZLATNA / GOLD



## 1POL 16A



- BE  15073 - 16A/250V~, tip SN31.01  
 SI  15061 - sukladno s EN-60669-1  
 - bezvijčano učvršćivanje vodiča presjeka 1.5-2.5mm<sup>2</sup>

### 1-WAY 16A

- 16A/250V~, type SN31.01  
 - in accordance with EN-60669-1  
 - plug-in contacts 1.5-2.5mm<sup>2</sup>



## IZM 16A



- BE  15074 - 16A/250V~, tip SN31.02  
 SI  15062 - sukladno s EN-60669-1  
 - bezvijčano učvršćivanje vodiča presjeka 1.5-2.5mm<sup>2</sup>

### 2-WAY 16A

- 16A/250V~, type SN31.02  
 - in accordance with EN-60669-1  
 - plug-in contacts 1.5-2.5mm<sup>2</sup>



## SER 16A



- BE  15075 - 16A/250V~, tip SN31.03  
 SI  15063 - sukladno s EN-60669-1  
 - bezvijčano učvršćivanje vodiča presjeka 1.5-2.5mm<sup>2</sup>

### 2GANG-1WAY 16A

- 16A/250V~, type SN31.03  
 - in accordance with EN-60669-1  
 - plug-in contacts 1.5-2.5mm<sup>2</sup>



## KRIŽ 16A



- BE  15076 - 16A/250V~, tip SN31.04  
 SI  15064 - sukladno s EN-60669-1  
 - bezvijčano učvršćivanje vodiča presjeka 1.5-2.5mm<sup>2</sup>

### INTERMEDIATE 16A

- 16A/250V~, type SN31.04  
 - in accordance with EN-60669-1  
 - plug-in contacts 1.5-2.5mm<sup>2</sup>



## 2POL 16A



- BE  15077 - 16A/250V~, tip SN31.05  
 SI  15065 - sukladno s EN-60669-1  
 - bezvijčano učvršćivanje vodiča presjeka 1.5-2.5mm<sup>2</sup>

### 2POLE 16A

- 16A/250V~, type SN31.05  
 - in accordance with EN-60669-1  
 - plug-in contacts 1.5-2.5mm<sup>2</sup>



## DVOSTRUKA IZM 16A



- BE  15078 - 16A/250V~, tip SN31.06  
 SI  15066 - sukladno s EN-60669-1  
 - bezvijčano učvršćivanje vodiča presjeka 1.5-2.5mm<sup>2</sup>

### DOUBLE 2WAY 16A

- 16A/250V~, type SN31.06  
 - in accordance with EN-60669-1  
 - plug-in contacts 1.5-2.5mm<sup>2</sup>



## TIPKALO DVOSTRUKO 16A



- BE  15084 - 16A/250V~, tip SN31.21  
 SI  15068 - sukladno s EN-60669-1  
 - bezvijčano učvršćivanje vodiča presjeka 1.5-2.5mm<sup>2</sup>

### PUSH BUTTON DOUBLE 16A

- 16A/250V~, type SN31.21  
 - in accordance with EN-60669-1  
 - plug-in contacts 1.5-2.5mm<sup>2</sup>



**1POL 16A OSVETLJENO**

- BE  15079 - 16A/250V~, tip SN31.01  
 SI  15069 - sukladno s EN-60669-1  
 - bežvičano učvrščivanje vodiča presjeka 1.5-2.5mm<sup>2</sup>

**1-WAY 16A ILLUMINATED**

- 16A/250V~, type SN31.01  
 - in accordance with EN-60669-1  
 - plug-in contacts 1.5-2.5mm<sup>2</sup>

**IZM 16A OSVETLJENO**

- BE  15080 - 16A/250V~, tip SN31.02  
 SI  15070 - sukladno s EN-60669-1  
 - bežvičano učvrščivanje vodiča presjeka 1.5-2.5mm<sup>2</sup>

**2-WAY 16A ILLUMINATED**

- 16A/250V~, type SN31.02  
 - in accordance with EN-60669-1  
 - plug-in contacts 1.5-2.5mm<sup>2</sup>

**TIPKALO 16A OSVETLJENO**

- BE  15083 - 16A/250V~, tip SN31.20  
 SI  15067 - sukladno s EN-60669-1  
 - bežvičano učvrščivanje vodiča presjeka 1.5-2.5mm<sup>2</sup>

**PUSH BUTTON 16A ILLUMINATED**

- 16A/250V~, type SN31.20  
 - in accordance with EN-60669-1  
 - plug-in contacts 1.5-2.5mm<sup>2</sup>

**ŠUKO 16A**

- BE  17453 - priključnica šuko sa zaštitnim kontaktom  
 - 16A/250V~, tip VN01  
 SI  17450 - sukladno s EN-60884-1, CEE7  
 - vijčano pričvrščivanje vodiča presjeka 1.5-2.5mm<sup>2</sup>

**SCHUKO 16A**

- schuko socket 2P+E  
 - 16A/250V~, type VN01  
 - in accordance with EN-60884-1, CEE7  
 - screw contacts 1.5-2.5mm<sup>2</sup>

**ŠUKO 16A DVOSTRUKA HORIZONTALNA 16A**

- BE  15137 - priključnice šuko sa zaštitnim kontaktom  
 - 16A/250V~, tip VN01  
 SI  15136 - sukladno s EN-60884-1, CEE7  
 - vijčano pričvrščivanje vodiča presjeka 1.5-2.5mm<sup>2</sup>

**SCHUKO DOUBLE HORIZONTAL 16A**

- double schuko socket 2P+E  
 - 16A/250V~, type 2x VN01  
 - in accordance with EN-60884-1, CEE7  
 - screw contacts 1.5-2.5mm<sup>2</sup>

**ŠUKO 16A DVOSTRUKA VERTIKALNA 16A**

- BE  15141 - priključnice šuko sa zaštitnim kontaktom  
 - 16A/250V~, tip VN01  
 SI  15140 - sukladno s IEC-60884-1, CEE7  
 - vijčano pričvrščivanje vodiča presjeka 1.5-2.5mm<sup>2</sup>

**SCHUKO DOUBLE VERTICAL 16A**

- double schuko socket 2P+E  
 - 16A/250V~, type 2x VN01  
 - in accordance with EN-60884-1, CEE7  
 - screw contacts 1.5-2.5mm<sup>2</sup>



**ŠUKO + MEN HORIZONTALNA**

- 15135 - kombinacija sklopke i priključnice  
 - 16A/250V~, tip SN31.02+VN01  
 15134 - skladno s IEC-60884-1, CEE7  
 - vijčano pričvršćivanje vodiča presjeka 1.5-2.5mm<sup>2</sup>

**SCHUKO+2-WAY HORIZONTAL**

- 16A/250V~, type VN01 + SN31.02  
 - in accordance with EN-60669-1  
 - contacts 1.5-2.5mm<sup>2</sup>

**ŠUKO + MEN VERTIKALNA**

- BE  15139 - kombinacija sklopke i priključnice  
 - 16A/250V~, tip SN31.02+VN01  
 SI  15138 - skladno s IEC-60884-1, CEE7  
 - vijčano pričvršćivanje vodiča presjeka 1.5-2.5mm<sup>2</sup>

**SCHUKO+2-WAY VERTICAL**

- 16A/250V~, type VN01 + SN31.02  
 - in accordance with EN-60669-1  
 - contacts 1.5-2.5mm<sup>2</sup>

**PRIKLJUČNICA 5POL 3P+N+E**

- BE  17525 - 3P+N+E priključnica, 16A/380V~  
 - JUS standard, nije za uporabu u EU  
 SI  17524 - skladno s EN-60884-1, CEE7  
 - vijčano pričvršćivanje vodiča presjeka 1.5-2.5mm<sup>2</sup>

**SOCKET 5POLE 3P+N+E**

- socket 3P+N+E, 16A/380V~  
 - JUS standard, not for use in EU  
 - in accordance with EN-60884-1, CEE7  
 - screw contacts 1.5-2.5mm<sup>2</sup>

**RAZVODNICA RN01 IP44**

- BE  17558 - nadžbukna razvodnica  
 - dimenzija 80x80mm, visina 45mm  
 SI  17452

**CONNECTION BOX RN01 IP44**

- surface mounting connection box  
 - size 80x80mm, depth 45mm

**RAZVODNICA ND01 IP55**

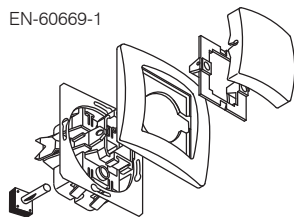
- BE  17739 - nadžbukna razvodnica  
 - dimenzija 80x80mm, visina 45mm  
 SI  17736 - uvodnice su priložene

**CONNECTION BOX ND01 IP55**

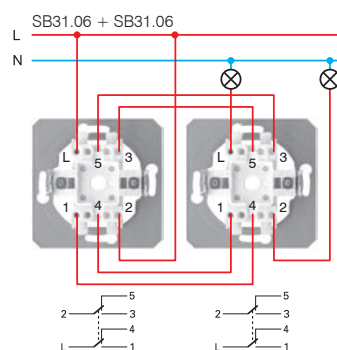
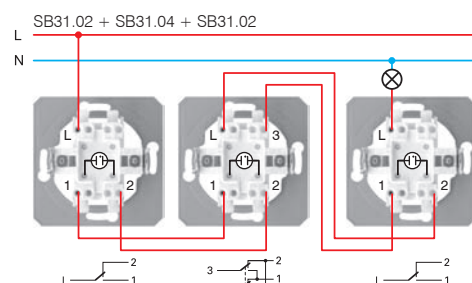
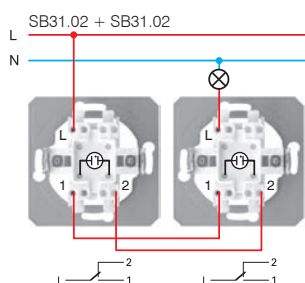
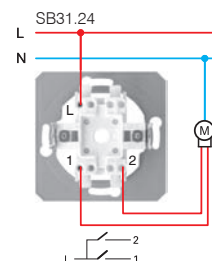
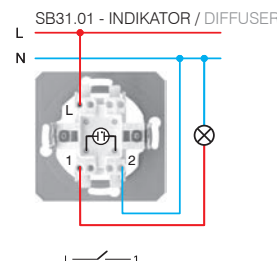
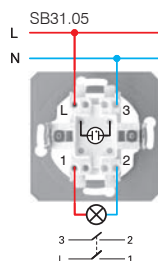
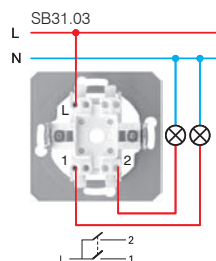
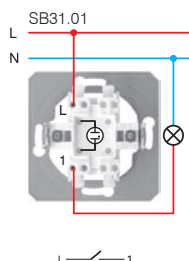
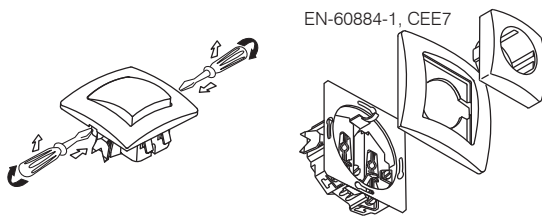
- surface mounting connection box  
 - size 80x80mm, depth 45mm  
 - glands are included

## SKLOPKE I PRIKLJUČNICE / SWITCHES AND SOCKETS

EN-60669-1



EN-60884-1, CEE7



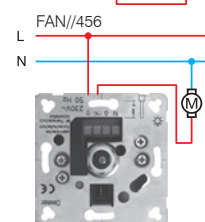
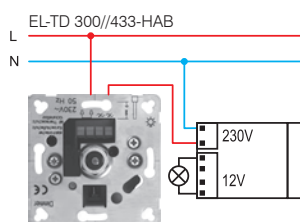
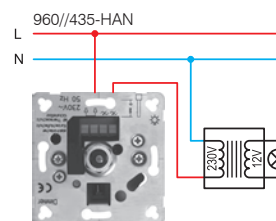
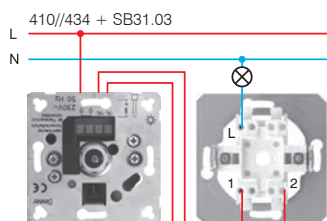
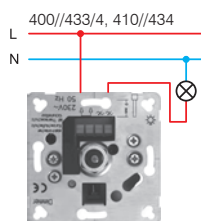
## VT01 VIJČANI KONTAKTI / SCREW CONTACT



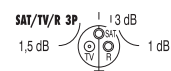
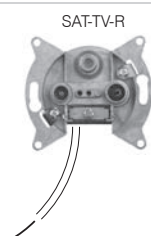
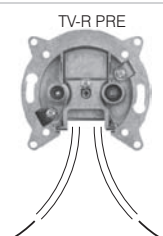
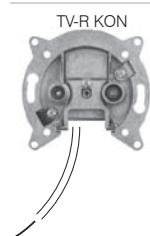
## BV01 BEZVIJČANI KONTAKTI / PLUG-IN CONTACT



## REGULATORI SVJETLA / DIMMERS



## TV-R-SAT PRIKLJUČNICE / TV-R-SAT SOCKETS



### REDNE STEZALJKE ZATVORENE

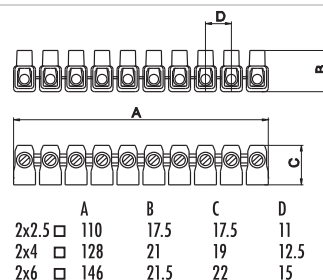


- 450V~; 2x2.5mm<sup>2</sup> ÷ 2x6mm<sup>2</sup>
- materijal: termoplast PC
- boja: prozirna
- broj polova: 10

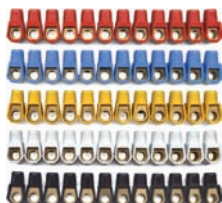
#### CONNECTORS BOX

- 450V~; 2x2.5mm<sup>2</sup> ÷ 2x6mm<sup>2</sup>
- material: thermoplast PC
- colour: transparent
- number of poles: 10

16044	PC 2x2.5mm <sup>2</sup>	NS. 10P
16045	PC 2x4mm <sup>2</sup>	NS. 10P
16046	PC 2x6mm <sup>2</sup>	NS. 10P



### JEDNOREDNE STEZALJKE

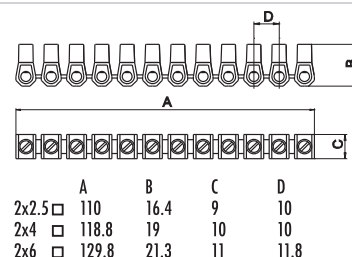


- 450V~; 2x2.5mm<sup>2</sup> ÷ 2x6mm<sup>2</sup>
- materijal: termoplast PA6
- boja: u 5 boja pakirane zajedno (crvena, plava, žuta, crna, bijela)
- broj polova: 12

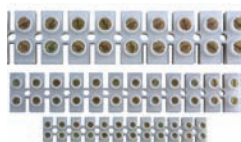
#### 1 ROW CONNECTORS

- 450V~; 2x2.5mm<sup>2</sup> ÷ 2x6mm<sup>2</sup>
- material: thermoplast PA6
- colour: 5 colours in one package (red, blue, yellow, black, white)
- number of poles: 12

16027	PA 2x2.5mm <sup>2</sup>	NS 12 12P
16028	PA 2x4mm <sup>2</sup>	NS 12 12P
16034	PA 2x6mm <sup>2</sup>	NS 12 12P



### DVOREDNE STEZALJKE

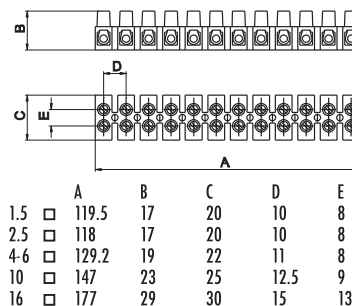


- 450V~; 1.5mm<sup>2</sup> ÷ 16mm<sup>2</sup>
- materijal: termoplast PA6
- boja: bijela
- broj polova: 12

#### 2 ROW CONNECTORS

- 450V~; 1.5mm<sup>2</sup> ÷ 16mm<sup>2</sup>
- material: thermoplast PA6
- colour: white
- number of poles: 12

13364	PA 1.5mm <sup>2</sup>	NS 09 12P
13366	PA 2.5mm <sup>2</sup>	NS 07 12P
13367	PA 4-6mm <sup>2</sup>	NS 08 12P
13368	PA 10mm <sup>2</sup>	NS 11 12P
13369	PA 16mm <sup>2</sup>	NS 14 12P



### BEZVIJČANE REDNE STEZALJKE

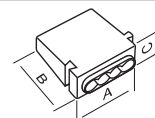


- 16A 450V~, - materijal: termoplast PA66, - boja: siva
- broj polova: 3÷5
- bezvičajni kontakti 1.5 ÷ 2.5mm<sup>2</sup>

#### SCREWLESS (PLUG-IN) CONNECTORS

- 16A 450V~, - material: thermoplast PA66, - colour: grey
- number of poles: 3÷5
- screwless (plug-in) contacts 1.5÷2.5mm<sup>2</sup>

16054	PA 2.5mm <sup>2</sup>	PC302 2P
16047	PA 2.5mm <sup>2</sup>	PC253 3P
16048	PA 2.5mm <sup>2</sup>	PC254 4P
16049	PA 2.5mm <sup>2</sup>	PC255 5P



	A	B	C
2p	9.5	21	15.5
3p	14.9	18.8	9.25
4p	18.5	18.8	9.25
5p	22.1	18.8	9.25

15054

#### PO DSM 78



- promjer 78mm, dubina 40mm
- IP20, 650°C, 500V~
- sukladno s DIN 49073 in VDE 0606

#### PO DSM78

- diameter 78mm, depth 40mm
- IP20, 650°C, 500V~
- in accordance with DIN 49073 and VDE 0606

15110

#### VS SM 78x45



- promjer 78mm, dubina 45mm
- ugradni promjer Ø78mm
- IP30, 850°C, 400V~
- sukladno s DIN 49073 i VDE 0606
- montaža s nožicama

#### VS SM 78x45

- diameter 78mm, depth 45mm
- cutting hole diameter Ø78mm
- IP30, 850°C, 400V~
- in accordance with DIN 49073 and VDE 0606
- mounting with claws

15278

#### VS SM 105x105



- dimenzija 105x105mm, dubina 50mm
- ugradna dimenzija 105x105mm
- IP30, 850°C, 400V~
- sukladno s DIN 49073 i VDE 0606
- montaža s nožicama

#### VS SM 105x105

- size 105x105mm, depth 50mm
- cutting hole 105x105mm
- IP30, 850°C, 400V~
- in accordance with DIN 49073 and VDE 0606
- mounting with claws

## G R L A Z A Ž A R U L J E / L A M P H O L D E R S



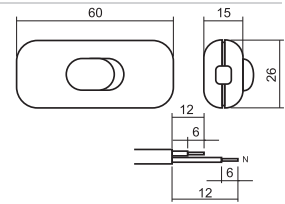
■ 13419  
□ 13436

**KABELSKA SKLOPKA 300**

- 2A / 250V~  
- materijal: termoplast PA66  
- bezvijčani kontakti: 0.5÷0.75mm<sup>2</sup>

**INLINE SWITCH 300**

- 2A / 250V~  
- material: thermoplast PA66  
- screwless (plug-in) contacts: 0.5÷0.75mm<sup>2</sup>



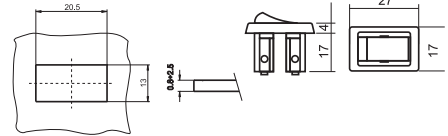
■ 13445  
□ 13446

**KABELSKA SKLOPKA 320**

- 2A / 250V~  
- materijal: termoplast PA66  
- vijčani kontakti: 0.5÷1mm<sup>2</sup>  
- ugradna dimenzija: 14x25mm

**SWITCH FOR APPLIANCES 320**

- 2A / 250V~  
- material: thermoplast PA66  
- screw contacts: 0.5÷1mm<sup>2</sup>  
- build-in measure: 14x25mm



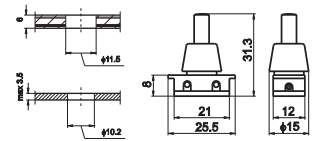
13301

**SKLOPKA TIPKA 330**

- 2A / 250V~  
- materijal: termoplast PA66  
- vijčani kontakti: 0.5÷1mm<sup>2</sup>  
- ugradna dimenzija: 11.5mm

**SWITCH FOR APPLIANCES 330**

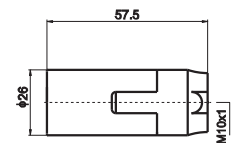
- 2A / 250V~  
- material: thermoplast PA66  
- screw contacts: 0.5÷1mm<sup>2</sup>  
- build-in measure: 11.5mm

**E 14**

■ 15517  
□ 15591

**505 P CR OE44  
505 P BE OE45.5**

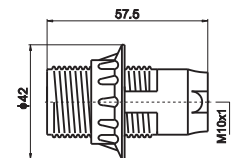
- 2A / 250V~  
- materijal: termoplast PET  
- temperaturna izdržljivost: 210°C  
- bezvijčani kontakti: 0.5÷1mm<sup>2</sup>  
- pričvršćivanje: M10x1  
- 2A / 250V~  
- material: thermoplast PET  
- temperature resistance: 210°C  
- screwless (plug-in) contacts: 0.5÷1mm<sup>2</sup>  
- fixing: M10x1



■ 15543  
□ 15600

**605 M CR OE43  
605 M BE OE43.5**

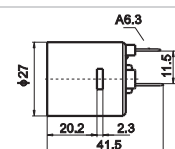
- 2A / 250V~  
- materijal: termoplast PET  
- temperaturna izdržljivost: 210°C  
- bezvijčani kontakti: 0.5÷1mm<sup>2</sup>  
- pričvršćivanje: M10x1  
- 2A / 250V~  
- material: thermoplast PET  
- temperature resistance: 210°C  
- screwless (plug-in) contacts: 0.5÷1mm<sup>2</sup>  
- fixing: M10x1



15612

**PA E14 OE 18 A6.3**

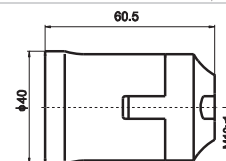
- 2A / 250V~  
- materijal: termoplast PA  
- temperaturna izdržljivost: 80°C  
- bezvijčani kontakti: A6.3  
- pričvršćivanje: utor  
- 2A / 250V~  
- material: thermoplast PA  
- temperature resistance: 80°C  
- screwless (plug-in) contacts: A6.3  
- fixing: slot



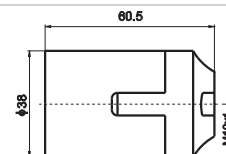
## E 27



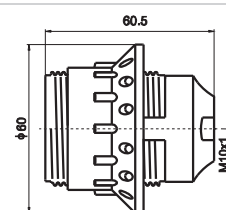
- 15565 **PF OE 42.2 T190 P**  
 - 4A / 250V~  
 - material: duroplast PF  
 - temperaturna izdržljivost: 190°C  
 - bezvijčani kontakti: 0.75 ÷ 1.5mm<sup>2</sup>  
 - pričvršćivanje: M10x1  
 - 4A / 250V~  
 - material: thermosets PF  
 - temperature resistance: 190°C  
 - screwless (plug-in) contacts: 0.75 ÷ 1.5mm<sup>2</sup>  
 - fixing: M10x1



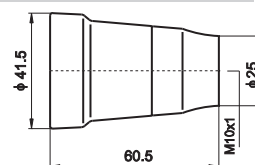
- 15519 **805 P CR OE 42**  
 □ 15594 **805 P BE OE 42.5**  
 - 4A / 250V~  
 - material: termoplast PET  
 - temperaturna izdržljivost: 210°C  
 - bezvijčani kontakti: 0.75 ÷ 1.5mm<sup>2</sup>  
 - pričvršćivanje: M10x1  
 - 4A / 250V~  
 - material: thermoplast PET  
 - temperature resistance: 210°C  
 - screwless (plug-in) contacts: 0.75 ÷ 1.5mm<sup>2</sup>  
 - fixing: M10x1



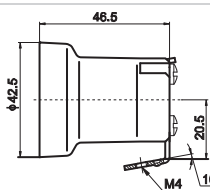
- 15553 **815 M CR OE 41.2**  
 □ 15595 **815 M BE OE 41.5**  
 - 4A / 250V~  
 - material: duroplast PF, termoplast PET  
 - temperaturna izdržljivost: 190°C, 210°C  
 - bezvijčani kontakti: 0.75 ÷ 1.5mm<sup>2</sup>  
 - pričvršćivanje: M10x1  
 - 4A / 250V~  
 - material: thermosets PF, thermoplast PET  
 - temperature resistance: 190°C, 210°C  
 - screwless (plug-in) contacts: 0.75 ÷ 1.5mm<sup>2</sup>  
 - fixing: M10x1



- 15501 **KER DD OE 15.21 T210**  
 - 4A / 250V~  
 - material: keramika  
 - temperaturna izdržljivost: 210°C  
 - vijčani kontakti: 0.75 ÷ 1.5mm<sup>2</sup>  
 - pričvršćivanje: M10x1  
 - 4A / 250V~  
 - material: porcelain  
 - temperature resistance: 210°C  
 - screw contacts: 0.75 ÷ 1.5mm<sup>2</sup>  
 - fixing: M10x1



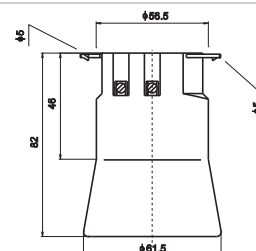
- 15569 **KER OE 15 T210 K8 M4**  
 - 4A / 250V~  
 - material: keramika  
 - temperaturna izdržljivost: 210°C  
 - vijčani kontakti: 0.75 ÷ 1.5mm<sup>2</sup>  
 - pričvršćivanje: M4 K8  
 - 4A / 250V~  
 - material: porcelain  
 - temperature resistance: 210°C  
 - screw contacts: 0.75 ÷ 1.5mm<sup>2</sup>  
 - fixing: M4 K8



## E 40

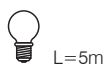


- 13388 **KER OE 14 PR**  
 - 16A / 750V~  
 - material: keramika  
 - temperaturna izdržljivost: 210°C  
 - vijčani kontakti: 1.5 ÷ 4mm<sup>2</sup>  
 - pričvršćivanje: nosač: 2x5mm  
 - 16A / 750V~  
 - material: porcelain  
 - temperature resistance: 210°C  
 - screw contacts: 1.5 ÷ 4mm<sup>2</sup>  
 - fixing: bracket: 2x5mm

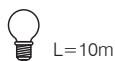




17203  
40W



17204  
40W



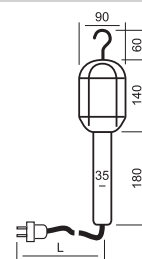
NL03 E27

CLASS II  $\square$  CE IP 10

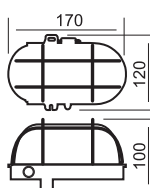
- rukohvat: termoplast PA
- priključni kabel duljine: 5, 10, 15 m
- sa sklopkom za uključivanje: 2A/250V~
- zaštita s metalnom mrežicom
- sukladno s EN-60598

NL03 E27

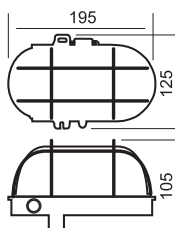
- handle: thermoplastic PA
- extension cable length: 5, 10, 15 m
- on/off switch: 2A/250V~
- metal guard protection
- in accordance with: EN-60598



17299  
60W LB4122



17300  
75W LB4142



LB41. E27

IP 44  $\triangle$  CLASS II  $\square$  CE  $\text{E}$ 15  $\nabla$

- podnožje: termoplast PA
- staklo: kristalno
- zaštita s metalnom mrežicom
- sukladno s EN-60598

LB41. E27

- fitting: thermoplastic PA
- diffuser: crystal glass
- metal guard protection
- in accordance with: EN-60598



17232  
1x60W



17233  
1x60W



17370  
2x60W  
NL 10.32



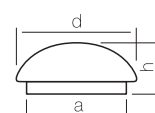
NL10. E27

IP 20 CLASS I  $\oplus$  CE

- podnožje: obostrano lakirani lim
- staklo: opalno, kristalno
- 2 x 60W: ožičeno
- sukladno s EN-60598

NL10. E27

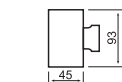
- fitting: powder coated metal
- diffuser: opal glass, crystal glass
- 2 x 60W: pre-wired
- in accordance with: EN-60598



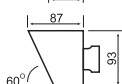
d	a	h
Ø200	180	100
Ø250	180	100
Ø300	235	110



17366  
1 XE27 / N 84.5



17365  
1 XE27 / N 84.5



NL20. E27

IP 20 CLASS II  $\square$  CE  $\text{E}$ 22

- podnožje: termoplast PA
- staklo: opalno, kristalno
- navoj podnožja: N 84.5
- sukladno s EN-60598

NL20. E27

- fitting: thermoplastic PA
- diffuser: opal glass, crystal glass
- ceiling thread: N 84.5
- in accordance with: EN-60598

JVE  
08

distributer: